

Recombinant Bovine ACVR2A Protein, His-tagged

Cat. No. ACVR2A-290B Lot. No. (See product label)

SPECIFICATION

Product Overview	Recombinant Bovine ACVR2A(Leu192~Ser325) fused with His tag at N-terminal was expressed in E. coli.
Species	Bovine
Source	E.coli
ProteinLength	Leu192~Ser325
Form	PBS, pH7.4, containing 0.01% SKL, 1mM DTT, 5% Trehalose and Proclin300.
Molecular Mass	16.8kDa
Endotoxin	<1.0EU per 1ug (determined by the LAL method)
Purity	> 95%
Applications	Positive Control; Immunogen; SDS-PAGE; WB. If bio-activity of the protein is needed, please check active protein
Stability	The thermal stability is described by the loss rate. The loss rate was determined by accelerated thermal degradation test, that is, incubate the protein at 37 centigrade for 48h, and no obvious degradation and precipitation were observed. The loss rate is less than 5% within the expiration date under appropriate storage condition.

 Tel: 1-631-559-9269 1-516-512-3133

 Email: info@creative-biomart.com  Fax: 1-631-938-8127

 45-1 Ramsey Road, Shirley, NY 11967, USA

Storage	Avoid repeated freeze/thaw cycles. Store at 2-8 centigrade for one month. Aliquot and store at -80 centigrade for 12 months.
----------------	--

Reconstitution	Reconstitute in PBS or others
-----------------------	-------------------------------

GENE INFORMATION

Gene Name	ACVR2A activin A receptor type 2A [Bos taurus]
------------------	--

Official Symbol	ACVR2A
------------------------	--------

Synonyms	ACVR2; ACTR-IIA; activin A receptor, type II; activin A receptor, type IIA
-----------------	--

Gene ID	281598
----------------	--------

mRNA Refseq	NM_174227
--------------------	-----------

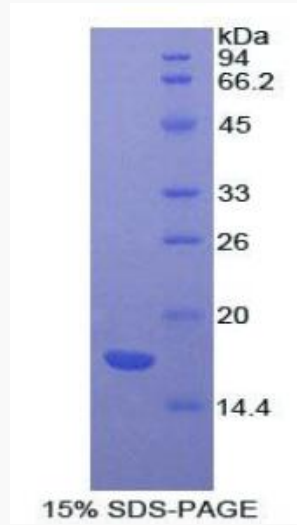
Protein Refseq	NP_776652
-----------------------	-----------

UniProt ID	Q28043
-------------------	--------

 Tel: 1-631-559-9269 1-516-512-3133

 Email: info@creative-biomart.com  Fax: 1-631-938-8127

 45-1 Ramsey Road, Shirley, NY 11967, USA



Tel: 1-631-559-9269 1-516-512-3133

Email: info@creative-biomart.com Fax: 1-631-938-8127

45-1 Ramsey Road, Shirley, NY 11967, USA