

# Recombinant Full Length Human ACVRL1 Protein, C-Flag-tagged

**Cat. No.** ACVRL1-1507HFL    **Lot. No.** (See product label)

## SPECIFICATION

<b>Product Overview</b>	Recombinant Full Length Human ACVRL1 Protein, fused to Flag-tag at C-terminus, was expressed in Mammalian cells.
<b>Species</b>	Human
<b>Source</b>	Mammalian Cells
<b>Description</b>	This gene encodes a type I cell-surface receptor for the TGF-beta superfamily of ligands. It shares with other type I receptors a high degree of similarity in serine-threonine kinase subdomains, a glycine- and serine-rich region (called the GS domain) preceding the kinase domain, and a short C-terminal tail. The encoded protein, sometimes termed ALK1, shares similar domain structures with other closely related ALK or activin receptor-like kinase proteins that form a subfamily of receptor serine/threonine kinases. Mutations in this gene are associated with hemorrhagic telangiectasia type 2, also known as Rendu-Osler-Weber syndrome 2.
<b>Form</b>	25 mM Tris HCl, pH 7.3, 100 mM glycine, 10% glycerol.
<b>Molecular Mass</b>	55.9 kDa
<b>AA Sequence</b>	MTLGSPRKGLMLLMALVTQGDPVKPSRGPLVTCTCESPHCKGPTCRGAWCTVVL VREEGRHPQEHRGCG NLHRELCRGRPTEFVNHYCCDSHLCNHNVS LVLEATQPP SEQPGTDGQLALILGPVLALLALVALGVLGL WHVRRRQEKQRGLHSELGESSLILKA SEQGDSMLGDLSDCTTGSGSGLPFLVQRTVARQVALVECVGK GRYGEVWRGL

 Tel: 1-631-559-9269    1-516-512-3133

 Email: [info@creative-biomart.com](mailto:info@creative-biomart.com)     Fax: 1-631-938-8127

 45-1 Ramsey Road, Shirley, NY 11967, USA



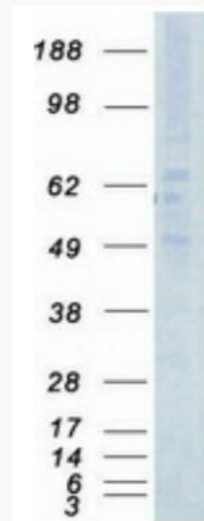
WHGESVAVKIFSSRDEQSWFRETEIYNTVLLRHDNILGFIASDMTSRNSSTQLWLITH  
 YH EHGSLYDFLQRQTLEPHLALRLAVSAACGLAHLHVEIFGTQGKPAIAHRDFKSRN  
 VLVKSNLQCCIADLG LAVMHSQGSYLDIGNNPRVGTKRYMAPEVLDEQIRTDCFE  
 SYKWTDIWAFLVWLWEIARRTIVNGIVED YRPPFYDVVPNDPSFEDMKKVVCVDQQ  
 TPTIPNRLAADPVLSGLAQMMRECWYPNPSARLTALRIKKTQ  
 KISNSPEKPKVIQTRTRPLEQKLISEEDLAANDILDYKDDDDKV

<b>Purity</b>	> 80% as determined by SDS-PAGE and Coomassie blue staining.
<b>Stability</b>	Stable for 12 months from the date of receipt of the product under proper storage and handling conditions. Avoid repeated freeze-thaw cycles.
<b>Storage</b>	Store at -80 centigrade.
<b>Concentration</b>	>50 ug/mL as determined by microplate BCA method.
<b>Preparation</b>	Recombinant protein was captured through anti-DDK affinity column followed by conventional chromatography steps.
<b>Protein Families</b>	Druggable Genome, Protein Kinase, Transmembrane
<b>Protein Pathways</b>	Cytokine-cytokine receptor interaction, TGF-beta signaling pathway
<b>Full Length</b>	Full L.

## GENE INFORMATION

<b>Gene Name</b>	ACVRL1 activin A receptor like type 1 [ Homo sapiens (human) ]
<b>Official Symbol</b>	ACVRL1

<b>Synonyms</b>	HHT; ALK1; HHT2; ORW2; SKR3; ALK-1; TSR-I; ACVRLK1
<b>Gene ID</b>	94
<b>mRNA Refseq</b>	NM_001077401.2
<b>Protein Refseq</b>	NP_001070869.1
<b>MIM</b>	601284
<b>UniProt ID</b>	P37023



Coomassie blue staining of purified ACVRL1 protein.

 Tel: 1-631-559-9269 1-516-512-3133

 Email: [info@creative-biomart.com](mailto:info@creative-biomart.com)  Fax: 1-631-938-8127

 45-1 Ramsey Road, Shirley, NY 11967, USA