

## Recombinant Human ACVRL1 Protein, GST-tagged

Cat. No. ACVRL1-260H Lot. No. (See product label)

### SPECIFICATION

**Product Overview** Human ACVRL1 full-length ORF ( AAH42637, 22 a.a. - 503 a.a.) recombinant protein with GST-tag at N-terminal.

**Species** Human

**Source** Wheat Germ

**Description** This gene encodes a type I cell-surface receptor for the TGF-beta superfamily of ligands. It shares with other type I receptors a high degree of similarity in serine-threonine kinase subdomains, a glycine- and serine-rich region (called the GS domain) preceding the kinase domain, and a short C-terminal tail. The encoded protein, sometimes termed ALK1, shares similar domain structures with other closely related ALK or activin receptor-like kinase proteins that form a subfamily of receptor serine/threonine kinases. Mutations in this gene are associated with hemorrhagic telangiectasia type 2, also known as Rendu-Osler-Weber syndrome 2. [provided by RefSeq, Jul 2008]

**Molecular Mass** 78.76 kDa

**AA Sequence** DPVKPSRGPLVTCTCESPHCKGPTCRGAWCTVVLVREEGRHPQEHRGCGNLHRE  
LCRGRPTEFVNHYCCDSHLCNHNVS LVLEATQPPSEQPGTDGQLALILGPVLALLAL  
VALGVLGLWRVRRRQEKQRGLHSELGESSLILKASEQGDSMLGDL L DSDCTTGSGS  
GLPFLVQRTVARQVALVECVGKG RYGEVWRGLWHGESVAVKIFSSRDEQSWFRET  
EIYNTVLLRHDNILGF IASDMTSRNSSTQLWLITHYHEHGS L YDFLQRQTLEPHLALRL

 Tel: 1-631-559-9269 1-516-512-3133

 Email: [info@creative-biomart.com](mailto:info@creative-biomart.com)  Fax: 1-631-938-8127

 45-1 Ramsey Road, Shirley, NY 11967, USA

AVSAACGLAHLHVEIFGTQGKPAIAHRDFKSRNVLVKSNLQCCCIADLGLAVMHSQGS  
 DYLDIGNNPRVGTKRYMAPEVLDEQIRTDCFESYKWTDIWAFGLVLWEIARRTIVNGI  
 VEDYRPPFYDVVPNDPSFEDMKKVVCDVQQTPTIPNRLAADPVLSGLAQMMRECW  
 YPNPSARLTALRIKKTLLQKISNSPEKPKVIQ

<b>Applications</b>	Enzyme-linked Immunoabsorbent Assay Western Blot (Recombinant protein) Antibody Production Protein Array
<b>Notes</b>	Best use within three months from the date of receipt of this protein.
<b>Storage</b>	Store at -80 centigrade. Aliquot to avoid repeated freezing and thawing.
<b>Storage Buffer</b>	50 mM Tris-HCl, 10 mM reduced Glutathione, pH=8.0 in the elution buffer.

## GENE INFORMATION

<b>Gene Name</b>	<a href="#">ACVRL1 activin A receptor type II-like 1 [ Homo sapiens ]</a>
<b>Official Symbol</b>	<a href="#">ACVRL1</a>
<b>Synonyms</b>	ACVRL1; activin A receptor type II-like 1; ACVRLK1, ORW2; serine/threonine-protein kinase receptor R3; ALK1; HHT; HHT2; activin receptor-like kinase 1; TGF-B superfamily receptor type I; activin A receptor, type II-like kinase 1; ORW2; SKR3; ALK-1; TSR-I; ACVRLK1;
<b>Gene ID</b>	<a href="#">94</a>
<b>mRNA Refseq</b>	<a href="#">NM_000020</a>

 Tel: 1-631-559-9269 1-516-512-3133

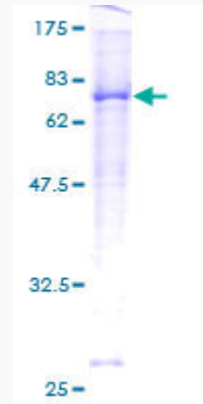
 Email: [info@creative-biomart.com](mailto:info@creative-biomart.com)  Fax: 1-631-938-8127

 45-1 Ramsey Road, Shirley, NY 11967, USA

Protein Refseq NP\_000011

MIM 601284

UniProt ID P37023



12.5% SDS-PAGE Stained with Coomassie Blue.

Tel: 1-631-559-9269 1-516-512-3133

Email: [info@creative-biomart.com](mailto:info@creative-biomart.com) Fax: 1-631-938-8127

45-1 Ramsey Road, Shirley, NY 11967, USA