

Recombinant Human ACVRL1 protein, His-tagged

Cat. No. ACVRL1-644H Lot. No. (See product label)

SPECIFICATION

Product Overview	Recombinant Human ACVRL1 protein(P37023)(Asp22-Gln118), fused with C-terminal His tag, was expressed in HEK293.
Species	Human
Source	HEK293
ProteinLength	Asp22-Gln118
Tag	C-His
Form	Lyophilized from 0.22µm filtered solution in PBS (pH 7.4). Normally 8% trehalose is added as protectant before lyophilization.
Bio-activity	Immobilized Human GDF-2, No Tag at 2µg/ml (100µl/well) on the plate. Dose response curve for Human ALK-1, His Tag with the EC50 of 9.6ng/ml determined by ELISA.
Molecular Mass	The protein has a predicted MW of 11.5 kDa. Due to glycosylation, the protein migrates to 25-30 kDa based on Tris-Bis PAGE result.
Endotoxin	Less than 1EU per µg by the LAL method.
Purity	> 95% as determined by Tris-Bis PAGE; > 95% as determined by HPLC

 Tel: 1-631-559-9269 1-516-512-3133

 Email: info@creative-biomart.com  Fax: 1-631-938-8127

 45-1 Ramsey Road, Shirley, NY 11967, USA

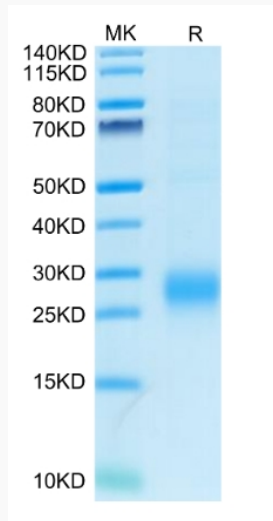
Storage	Reconstituted protein stable at -80°C for 12 months, 4°C for 1 week. Use a manual defrost freezer and avoid repeated freeze-thaw cycles.
Reconstitution	Centrifuge tubes before opening. Reconstituting to a concentration more than 100 µg/ml is recommended. Dissolve the lyophilized protein in distilled water.
GENE INFORMATION	
Gene Name	ACVRL1 activin A receptor type II-like 1 [Homo sapiens]
Official Symbol	ACVRL1
Synonyms	ACVRL1; activin A receptor type II-like 1; ACVRLK1, ORW2; serine/threonine-protein kinase receptor R3; ALK1; HHT; HHT2; activin receptor-like kinase 1; TGF-B superfamily receptor type I; activin A receptor, type II-like kinase 1; ORW2; SKR3; ALK-1; TSR-I; ACVRLK1;
Gene ID	94
mRNA Refseq	NM_000020
Protein Refseq	NP_000011
MIM	601284
UniProt ID	P37023

 Tel: 1-631-559-9269 1-516-512-3133

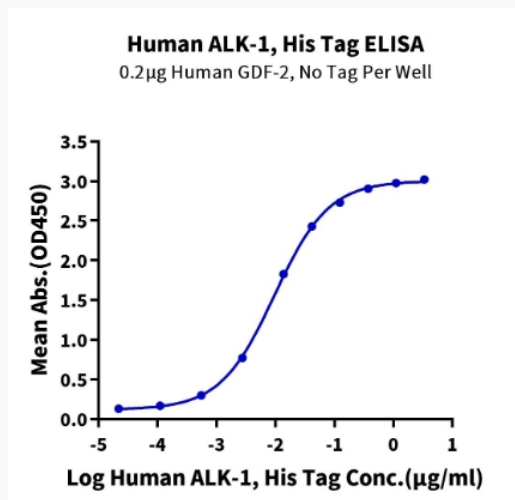
 Email: info@creative-biomart.com  Fax: 1-631-938-8127

 45-1 Ramsey Road, Shirley, NY 11967, USA

Tris-Bis PAGE



ELISA Data



 Tel: 1-631-559-9269 1-516-512-3133

 Email: info@creative-biomart.com  Fax: 1-631-938-8127

 45-1 Ramsey Road, Shirley, NY 11967, USA