

## Recombinant Human ACVRL1 Protein, His-tagged

Cat. No. ACVRL1-72H Lot. No. (See product label)

### SPECIFICATION

<b>Product Overview</b>	Recombinant Human ACVRL1 Protein (Ser238-Arg479) with N-His tag was expressed in E. coli.
<b>Species</b>	Human
<b>Source</b>	E.coli
<b>ProteinLength</b>	Ser238-Arg479
<b>Description</b>	This gene encodes a type I cell-surface receptor for the TGF-beta superfamily of ligands. It shares with other type I receptors a high degree of similarity in serine-threonine kinase subdomains, a glycine- and serine-rich region (called the GS domain) preceding the kinase domain, and a short C-terminal tail. The encoded protein, sometimes termed ALK1, shares similar domain structures with other closely related ALK or activin receptor-like kinase proteins that form a subfamily of receptor serine/threonine kinases. Mutations in this gene are associated with hemorrhagic telangiectasia type 2, also known as Rendu-Osler-Weber syndrome 2.
<b>Form</b>	Freeze-dried powder
<b>Molecular Mass</b>	Predicted Molecular Mass: 29.2 kDa
<b>Purity</b>	> 97%
<b>Applications</b>	Positive Control; Immunogen; SDS-PAGE; WB.

 Tel: 1-631-559-9269 1-516-512-3133

 Email: [info@creative-biomart.com](mailto:info@creative-biomart.com)  Fax: 1-631-938-8127

 45-1 Ramsey Road, Shirley, NY 11967, USA

<b>Stability</b>	The thermal stability is described by the loss rate. The loss rate was determined by accelerated thermal degradation test, that is, incubate the protein at 37 centigrade for 48h, and no obvious degradation and precipitation were observed. The loss rate is less than 5% within the expiration date under appropriate storage condition.
<b>Storage</b>	Avoid repeated freeze/thaw cycles. Store at 2-8 centigrade for one month. Aliquot and store at -80 centigrade for 12 months.
<b>Storage Buffer</b>	PBS, pH7.4, containing 0.01% SKL, 1 mM DTT, 5% Trehalose and Proclin300.
<b>Reconstitution</b>	Reconstitute in sterile water to a concentration of 0.1-1.0 mg/mL. Do not vortex.

## GENE INFORMATION

<b>Gene Name</b>	<a href="#">ACVRL1 activin A receptor type II-like 1 [ Homo sapiens (human) ]</a>
<b>Official Symbol</b>	<a href="#">ACVRL1</a>
<b>Synonyms</b>	ACVRL1; activin A receptor type II-like 1; ACVRLK1, ORW2; serine/threonine-protein kinase receptor R3; ALK1; HHT; HHT2; activin receptor-like kinase 1; TGF-B superfamily receptor type I; activin A receptor, type II-like kinase 1; ORW2; SKR3; ALK-1; TSR-I; ACVRLK1
<b>Gene ID</b>	<a href="#">94</a>
<b>mRNA Refseq</b>	<a href="#">NM_000020</a>
<b>Protein Refseq</b>	<a href="#">NP_000011</a>
<b>MIM</b>	<a href="#">601284</a>

 Tel: 1-631-559-9269 1-516-512-3133

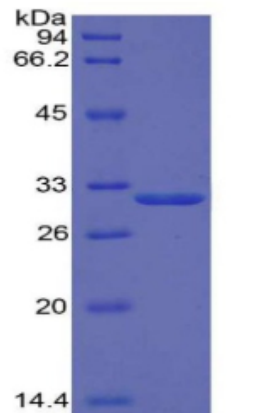
 Email: [info@creative-biomart.com](mailto:info@creative-biomart.com)  Fax: 1-631-938-8127

 45-1 Ramsey Road, Shirley, NY 11967, USA

UniProt ID

P37023

Human ALK1



15% SDS-PAGE

 Tel: 1-631-559-9269 1-516-512-3133

 Email: [info@creative-biomart.com](mailto:info@creative-biomart.com)  Fax: 1-631-938-8127

 45-1 Ramsey Road, Shirley, NY 11967, USA