

Active Recombinant Human ACY1 protein, His-tagged

Cat. No. ACY1-242H Lot. No. (See product label)

SPECIFICATION

| | |
|-------------------------|---|
| Product Overview | Active Recombinant Human ACY1 protein(NP_000657.1) (Met 1-Ser 408) was expressed in Insect Cells with a polyhistidine tag at the C-terminus. |
| Species | Human |
| Source | Insect Cells |
| ProteinLength | 1-408 aa |
| Form | Lyophilized from sterile 50mM Tris, 100mM NaCl, pH 8.0, 10% glycerol. |
| Bio-activity | Measured by its ability to cleave N-acetyl-L-Methione (Ac-Met). The specific activity is >4,000 pmoles/min/μg. |
| Molecular Mass | The recombinant human ACY1 consists of 419 amino acids and predicts a molecular mass of 47.3 kDa. It migrates as an approximately 44 kDa protein in SDS-PAGE under reducing conditions. |
| Endotoxin | < 1.0 EU per μg protein as determined by the LAL method. |
| Purity | > 95 % as determined by SDS-PAGE |
| Storage | Store it under sterile conditions at -20°C to -80°C upon receiving. Recommend to aliquot the protein into smaller quantities for optimal storage. Avoid repeated freeze-thaw cycles. |

 Tel: 1-631-559-9269 1-516-512-3133

 Email: info@creative-biomart.com  Fax: 1-631-938-8127

 45-1 Ramsey Road, Shirley, NY 11967, USA

Reconstitution It is recommended that sterile water be added to the vial to prepare a stock solution of 0.2 ug/ul. Centrifuge the vial at 4°C before opening to recover the entire contents.

GENE INFORMATION

Gene Name [ACY1 aminoacylase 1 \[Homo sapiens \]](#)

Official Symbol [ACY1](#)

Synonyms ACY1; aminoacylase 1; aminoacylase-1; acylase; N-acyl-L-amino-acid amidohydrolase; ACY-1; ACY1D;

Gene ID [95](#)

mRNA Refseq [NM_000666](#)

Protein Refseq [NP_000657](#)

MIM [104620](#)

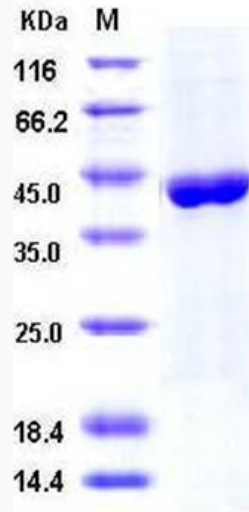
UniProt ID [Q03154](#)

 Tel: 1-631-559-9269 1-516-512-3133

 Email: info@creative-biomart.com  Fax: 1-631-938-8127

 45-1 Ramsey Road, Shirley, NY 11967, USA

SDS-PAGE



 Tel: 1-631-559-9269 1-516-512-3133

 Email: info@creative-biomart.com  Fax: 1-631-938-8127

 45-1 Ramsey Road, Shirley, NY 11967, USA