

## Recombinant Human ADA Protein, GST-tagged

Cat. No. ADA-268H Lot. No. (See product label)

### SPECIFICATION

**Product Overview** Human ADA full-length ORF ( AAH40226.1, 1 a.a. - 363 a.a.) recombinant protein with GST-tag at N-terminal.

**Species** Human

**Source** Wheat Germ

**Description** This gene encodes an enzyme that catalyzes the hydrolysis of adenosine to inosine. Various mutations have been described for this gene and have been linked to human diseases. Deficiency in this enzyme causes a form of severe combined immunodeficiency disease (SCID), in which there is dysfunction of both B and T lymphocytes with impaired cellular immunity and decreased production of immunoglobulins, whereas elevated levels of this enzyme have been associated with congenital hemolytic anemia. [provided by RefSeq, Jul 2008]

**Molecular Mass** 65.45 kDa

**AA Sequence**

```

MAQTPAFDKPKVELHVHLDGSIKPETILYYGRRRGIALPANTAEGLLNVIGMDKPLTL
PDFLAKFDYYMPAIAAGCREAIKRIAYEFVEMKAKEGVVYVEVRYSPHLLANSKVEPIP
WNQAEGDLTPDEVVALVGQGLQEGERDFGVKARSILCCMRHQPNWSPKVVELCKK
YQQQTVVAIDLAGEDETIPGSSLLPGHVQAYQEAVKSGIHRTVHAGEVGSAEVVKEAV
DILKTERLGHGYHTLEDQALYNRLRQENMHFEICPWSSYLTGAWKPDTEHAVIRLKN
DQANYSLNTDDPLIFKSTLTDYQMTKRDMGFTEEEFKRLNINAAKSSFLPEDEKRE
LLDLLYKAYGMPPSASAGQNL
    
```

 Tel: 1-631-559-9269 1-516-512-3133

 Email: [info@creative-biomart.com](mailto:info@creative-biomart.com)  Fax: 1-631-938-8127

 45-1 Ramsey Road, Shirley, NY 11967, USA

<b>Applications</b>	Enzyme-linked Immunoabsorbent Assay Western Blot (Recombinant protein) Antibody Production Protein Array
<b>Notes</b>	Best use within three months from the date of receipt of this protein.
<b>Storage</b>	Store at -80 centigrade. Aliquot to avoid repeated freezing and thawing.
<b>Storage Buffer</b>	50 mM Tris-HCl, 10 mM reduced Glutathione, pH=8.0 in the elution buffer.

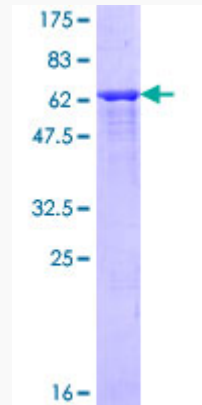
## GENE INFORMATION

<b>Gene Name</b>	<a href="#">ADA adenosine deaminase [ Homo sapiens ]</a>
<b>Official Symbol</b>	<a href="#">ADA</a>
<b>Synonyms</b>	ADA; adenosine deaminase; adenosine aminohydrolase;
<b>Gene ID</b>	<a href="#">100</a>
<b>mRNA Refseq</b>	<a href="#">NM_000022</a>
<b>Protein Refseq</b>	<a href="#">NP_000013</a>
<b>MIM</b>	<a href="#">608958</a>
<b>UniProt ID</b>	<a href="#">P00813</a>

 Tel: 1-631-559-9269 1-516-512-3133

 Email: [info@creative-biomart.com](mailto:info@creative-biomart.com)  Fax: 1-631-938-8127

 45-1 Ramsey Road, Shirley, NY 11967, USA



12.5% SDS-PAGE Stained with Coomassie Blue.

 Tel: 1-631-559-9269 1-516-512-3133

 Email: [info@creative-biomart.com](mailto:info@creative-biomart.com)  Fax: 1-631-938-8127

 45-1 Ramsey Road, Shirley, NY 11967, USA