

Recombinant Human ADAD1 Protein, GST-tagged

Cat. No. ADAD1-269H Lot. No. (See product label)

SPECIFICATION

Product Overview	Human ADAD1 full-length ORF (AAH40229.1, 1 a.a. - 565 a.a.) recombinant protein with GST-tag at N-terminal.
Species	Human
Source	Wheat Germ
Description	ADAD1 (Adenosine Deaminase Domain Containing 1) is a Protein Coding gene. GO annotations related to this gene include RNA binding and adenosine deaminase activity. An important paralog of this gene is ADAD2.
Molecular Mass	89.2 kDa
AA Sequence	MASNNHWFQSSQVPSFAQMLKKNLPVQPATKTITPTGWSSSESYGLSKMASKVTQ VTGNFPEPLLSKNLSSISNPVLPKIPKEFIMKYKRGEINPVSALHQFAQMQRVQLD LKETVTTGNVMGPYFAFCAVVDGIQYKTGLGQNKKESRSNAAKLALDELLQLDEPEP RILETSPPPPFAEPVVLSELAYVSKVHYEGRHIQYAKISQIVKERFNQLISNRSEYLK YSSSLAAFIERAGQHEVVAIGTGEYNYSQDIKPDGRVLHDTHAVVTARRSLLSKNPA MMEKSIFCTEPTSNLLTLKQINICLYMNQLPKGSAQIKSQLRLNPHSISAFEANEELC LHVAVEGKIYLTVYCPKDGVNRISSMSSDKLTRWEVLGVQGALLSHFIQPVISSILI GDGNCSDTRGLEIAIKQRVDDALTSKLPFYLVNRPHISLVPSAYPLQMNLEYKFLSL NWAQGDVSLEIVDGLSGKITESSPFKSGMSMASRLCKAAMLSRFNLLAKEAKKELLE AGTYHAAKCMSASYQEAKCKLKSYLQQHGYGWSWIVKSPCIEQFNM
Applications	Enzyme-linked Immunoabsorbent Assay

 Tel: 1-631-559-9269 1-516-512-3133

 Email: info@creative-biomart.com  Fax: 1-631-938-8127

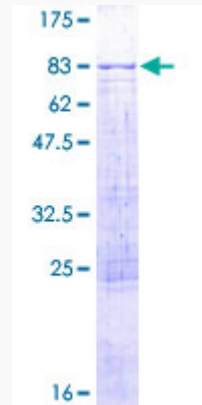
 45-1 Ramsey Road, Shirley, NY 11967, USA

	Western Blot (Recombinant protein) Antibody Production Protein Array
Notes	Best use within three months from the date of receipt of this protein.
Storage	Store at -80 centigrade. Aliquot to avoid repeated freezing and thawing.
Storage Buffer	50 mM Tris-HCl, 10 mM reduced Glutathione, pH=8.0 in the elution buffer.
GENE INFORMATION	
Gene Name	ADAD1 adenosine deaminase domain containing 1 (testis-specific) [Homo sapiens]
Official Symbol	ADAD1
Synonyms	ADAD1; adenosine deaminase domain containing 1 (testis-specific); adenosine deaminase domain-containing protein 1; Tenr; testis nuclear RNA-binding protein; FLJ32741;
Gene ID	132612
mRNA Refseq	NM_001159285
Protein Refseq	NP_001152757
MIM	614130
UniProt ID	Q96M93

 Tel: 1-631-559-9269 1-516-512-3133

 Email: info@creative-biomart.com  Fax: 1-631-938-8127

 45-1 Ramsey Road, Shirley, NY 11967, USA



12.5% SDS-PAGE Stained with Coomassie Blue.

 Tel: 1-631-559-9269 1-516-512-3133

 Email: info@creative-biomart.com  Fax: 1-631-938-8127

 45-1 Ramsey Road, Shirley, NY 11967, USA