

Recombinant Human ADAD1 protein, His-tagged

Cat. No. ADAD1-9366H **Lot. No.** (See product label)

SPECIFICATION

Product Overview	Recombinant Human ADAD1 protein(1 - 260 aa), fused with His tag, was expressed in E.coli.
Species	Human
Source	E.coli
ProteinLength	1 - 260 aa
Form	The purified protein was Lyophilized from sterile PBS (58mM Na ₂ HPO ₄ , 17mM NaH ₂ PO ₄ , 68mM NaCl, pH7.4). 5 % trehalose and 5 % mannitol are added as protectant before lyophilization. The elution buffer contain 300mM imidazole.
AA Sequence	MASNNHWFQSSQVPSFAQMLKKNLPVQPATKTITTTPTGWSSSESYGLSKMASKVTQ VTGNFPEPLLSKNLSSISNPVLPKKIPKEFIMKYKRGEINPVSALHQFAQMQRVQLD LKETVTTGNVMGPYFAFCAVVDGIQYKTGLGQNKKESRSNAAKLALDELLQLDEPEP RILETSGPPPPFAEPVVLSELAYVSKVHYEGRHIQYAKISQIVKERFNQLISNRSEYLK YSSSLAAFIIERAGQHEVVAIGTGEYNYSQD
Purity	85%, by SDS-PAGE with Coomassie Brilliant Blue staining.
Storage	Short-term storage: Store at 2-8°C for (1-2 weeks). Long-term storage: Aliquot and store at -20°C to -80°C for up to 3 months, reconstitution with sterile water and addition of an equal volume of glycerol. Avoid repeat freeze-thaw cycles.

 Tel: 1-631-559-9269 1-516-512-3133

 Email: info@creative-biomart.com  Fax: 1-631-938-8127

 45-1 Ramsey Road, Shirley, NY 11967, USA

Reconstitution

Reconstitute at 0.25 g/μl in 200 μl sterile water for short-term storage. After reconstitution with sterile water, if glycerol has no effect on subsequent experiments, it is recommended to add an equal volume of glycerol for long-term storage.

GENE INFORMATION

Gene Name [ADAD1 adenosine deaminase domain containing 1 \(testis-specific\) \[Homo sapiens \]](#)

Official Symbol [ADAD1](#)

Synonyms ADAD1; adenosine deaminase domain containing 1 (testis-specific); adenosine deaminase domain-containing protein 1; Tenr; testis nuclear RNA-binding protein; FLJ32741;

Gene ID [132612](#)

mRNA Refseq [NM_001159285](#)

Protein Refseq [NP_001152757](#)

MIM [614130](#)

UniProt ID [Q96M93](#)

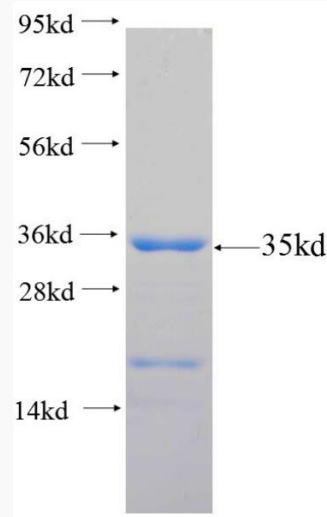
 Tel: 1-631-559-9269 1-516-512-3133

 Email: info@creative-biomart.com  Fax: 1-631-938-8127

 45-1 Ramsey Road, Shirley, NY 11967, USA



SDS-PAGE



Tel: 1-631-559-9269 1-516-512-3133

Email: info@creative-biomart.com Fax: 1-631-938-8127

45-1 Ramsey Road, Shirley, NY 11967, USA