

Recombinant Human ADAM10 protein, GST-tagged

Cat. No. ADAM10-2422H Lot. No. (See product label)

SPECIFICATION

Product Overview	Recombinant Human ADAM10 protein(306-512 aa), fused with N-terminal GST tag, was expressed in E. coli.
Species	Human
Source	E.coli
ProteinLength	306-512 aa
Tag	N-GST
Form	The purified protein was Lyophilized from sterile PBS (58mM Na ₂ HPO ₄ , 17mM NaH ₂ PO ₄ , 68mM NaCl, pH7.4). 5 % trehalose and 5 % mannitol are added as protectant before lyophilization.
Purity	85%, by SDS-PAGE with Coomassie Brilliant Blue staining.
Storage	Short-term storage: Store at 2-8°C for (1-2 weeks). Long-term storage: Aliquot and store at -20°C to -80°C for up to 3 months, reconstitution with sterile water and addition of an equal volume of glycerol. Avoid repeat freeze-thaw cycles.
Reconstitution	Reconstitute at 0.25 µg/µl in 200 µl sterile water for short-term storage. After reconstitution with sterile water, if glycerol has no effect on subsequent experiments, it is recommended to add an equal volume of glycerol for long-term storage.

 Tel: 1-631-559-9269 1-516-512-3133

 Email: info@creative-biomart.com  Fax: 1-631-938-8127

 45-1 Ramsey Road, Shirley, NY 11967, USA

AA Sequence

EQNHDDYCLAYVFTDRDFDDGVLGLAWVVGAPSGSSGGICEKSKLYSDGKKKSLNT
 GIITVQNYGSHVPPKVSHITFAHEVGHNFGSPHDSGTECTPGESKNLGQKENGNYIM
 YARATSGDKLNNNKFSLCSIRNISQVLEKKRNNCFVESGQPICGNMVEQGEECDC
 GYSQCKDECCFDANQPEGRKCKLKPQKQCSTVCIQVKV

GENE INFORMATION

Gene Name [ADAM10 ADAM metallopeptidase domain 10 \[Homo sapiens \]](#)

Official Symbol [ADAM10](#)

Synonyms

ADAM10; ADAM metallopeptidase domain 10; a disintegrin and metalloproteinase domain 10; disintegrin and metalloproteinase domain-containing protein 10; CD156c; HsT18717; kuz; MADM; CDw156; ADAM 10; kuzbanian protein homolog; mammalian disintegrin-metalloprotease; a disintegrin and metalloprotease domain 10; AD10;

Gene ID [102](#)

mRNA Refseq [NM_001110](#)

Protein Refseq [NP_001101](#)

MIM [602192](#)

UniProt ID [O14672](#)

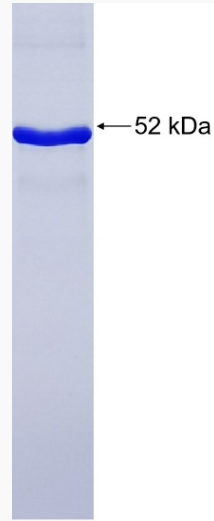
 Tel: 1-631-559-9269 1-516-512-3133

 Email: info@creative-biomart.com  Fax: 1-631-938-8127

 45-1 Ramsey Road, Shirley, NY 11967, USA



SDS-PAGE



Tel: 1-631-559-9269 1-516-512-3133

Email: info@creative-biomart.com Fax: 1-631-938-8127

45-1 Ramsey Road, Shirley, NY 11967, USA