

## Recombinant Human ADAM11 Protein, GST-tagged

Cat. No. ADAM11-273H Lot. No. (See product label)

### SPECIFICATION

<b>Product Overview</b>	Human ADAM11 partial ORF ( NP_002381, 230 a.a. - 333 a.a.) recombinant protein with GST-tag at N-terminal.
<b>Species</b>	Human
<b>Source</b>	Wheat Germ
<b>Description</b>	This gene encodes a member of the ADAM (a disintegrin and metalloprotease) protein family. Members of this family are membrane-anchored proteins structurally related to snake venom disintegrins, and have been implicated in a variety of biological processes involving cell-cell and cell-matrix interactions, including fertilization, muscle development, and neurogenesis. The encoded preproprotein is proteolytically processed to generate the mature protease. This gene represents a candidate tumor suppressor gene for human breast cancer based on its location within a minimal region of chromosome 17q21 previously defined by tumor deletion mapping. Alternative splicing results in multiple transcript variants, at least one of which encodes an isoform that is proteolytically processed. [provided by RefSeq, Jan 2016]
<b>Molecular Mass</b>	37.18 kDa
<b>AA Sequence</b>	GHPTVHSETKYVELIVINDHQLFEQMRQSVVLTSNFAKSVVNLADVYKEQLNTRIVL VAMETWADGDKIQVQDDLLETLARLMVYRREGLPEPSDATHLFSGR
<b>Applications</b>	Enzyme-linked Immunoabsorbent Assay

 Tel: 1-631-559-9269 1-516-512-3133

 Email: [info@creative-biomart.com](mailto:info@creative-biomart.com)  Fax: 1-631-938-8127

 45-1 Ramsey Road, Shirley, NY 11967, USA

Western Blot (Recombinant protein)  
 Antibody Production  
 Protein Array

<b>Notes</b>	Best use within three months from the date of receipt of this protein.
<b>Storage</b>	Store at -80 centigrade. Aliquot to avoid repeated freezing and thawing.
<b>Storage Buffer</b>	50 mM Tris-HCl, 10 mM reduced Glutathione, pH=8.0 in the elution buffer.

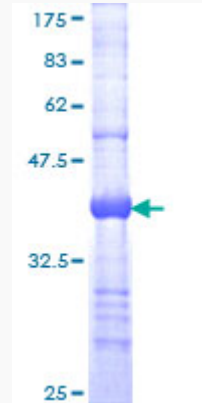
## GENE INFORMATION

<b>Gene Name</b>	<a href="#">ADAM11 ADAM metallopeptidase domain 11 [ Homo sapiens ]</a>
<b>Official Symbol</b>	<a href="#">ADAM11</a>
<b>Synonyms</b>	ADAM11; ADAM metallopeptidase domain 11; a disintegrin and metalloproteinase domain 11 , MDC; disintegrin and metalloproteinase domain-containing protein 11; metalloproteinase like; disintegrin like; cysteine rich protein; ADAM 11; MDC;
<b>Gene ID</b>	<a href="#">4185</a>
<b>mRNA Refseq</b>	<a href="#">NM_002390</a>
<b>Protein Refseq</b>	<a href="#">NP_002381</a>
<b>MIM</b>	<a href="#">155120</a>
<b>UniProt ID</b>	<a href="#">O75078</a>

 Tel: 1-631-559-9269 1-516-512-3133

 Email: [info@creative-biomart.com](mailto:info@creative-biomart.com)  Fax: 1-631-938-8127

 45-1 Ramsey Road, Shirley, NY 11967, USA



12.5% SDS-PAGE Stained with Coomassie Blue.

Tel: 1-631-559-9269 1-516-512-3133

Email: [info@creative-biomart.com](mailto:info@creative-biomart.com) Fax: 1-631-938-8127

45-1 Ramsey Road, Shirley, NY 11967, USA