

# Recombinant Human ADAM11 Protein, Myc/DDK-tagged, C13 and N15-labeled

**Cat. No.** ADAM11-5276H    **Lot. No.** (See product label)

## SPECIFICATION

<b>Product Overview</b>	ADAM11 MS Standard C13 and N15-labeled recombinant protein (NP_002381) with a C-terminal MYC/DDK tag, was expressed in HEK293 cells.
<b>Species</b>	Human
<b>Source</b>	HEK293
<b>Description</b>	This gene encodes a member of the ADAM (a disintegrin and metalloprotease) protein family. Members of this family are membrane-anchored proteins structurally related to snake venom disintegrins, and have been implicated in a variety of biological processes involving cell-cell and cell-matrix interactions, including fertilization, muscle development, and neurogenesis. The encoded preproprotein is proteolytically processed to generate the mature protease. This gene represents a candidate tumor suppressor gene for human breast cancer based on its location within a minimal region of chromosome 17q21 previously defined by tumor deletion mapping. Alternative splicing results in multiple transcript variants, at least one of which encodes an isoform that is proteolytically processed.
<b>Molecular Mass</b>	83.2 kDa
<b>AA Sequence</b>	MRLRRWAFALLLSLLPTPGLGTQGPAGALRWGGLPQLGGPGAPEVTEPSRLVR ESSGGEVRKQQLDTRVRQEPPGGPPVHLAQVSFVIPAFNSNFTLDLELNHHLLSSQ YVERHFSREGTTQHSTGAGDHCYYQGKLRGNPHSFAALSTCQGLHGVFSDGNLTY

 Tel: 1-631-559-9269    1-516-512-3133

 Email: [info@creative-biomart.com](mailto:info@creative-biomart.com)     Fax: 1-631-938-8127

 45-1 Ramsey Road, Shirley, NY 11967, USA

IVEPQEVAGPWGAPQGPLPHLIYRTPLLPDPLGCREPGCLFAVPAQSAPPNRPRLR  
 RKRQVRRGHPTVHSETKYVELIVINDHQLFEQMRQSVVLTSNFAKSVVNLADVITYKE  
 QLNTRIVLVAMETWADGDKIQVQDDLLETARLMVYRREGLPEPSDATHLFSGRFTQ  
 STSSGAAYVGGICSLSHGGGVNEYGNMGAMAVTLAQTGQNLGMMWNKHRSSAG  
 DCKCPDIWLGCIMEDTGFYLPRKFSRCSIDEYNQFLQEGGGSCLFNKPLKLLDPPEC  
 GNGFVEAGEECDGCSVQECRAGGNCKKCTLTHDAMCSDGLCCRRCKYEPGRV  
 SCREAVNECDIAETCTGDSSQCPPNLHKLDGYYCDHEQGRCYGGRCRCKTRDRQCQ  
 VLWGHAAADRFCYEKLNVEGTERGSCGRKGSWVQCCKQDVLGFLLCVNISGAP  
 RLGDLVGDISSVTFYHQKELDCRGGHVQLADGSDLSYVEDGTACGPNMLCLDHR  
 CLPASAFNFSTCPGSGERRICSHHGVCNEGKICQPDWTGKDCSIHNPLPTSPPT  
 GETERYKGPSGTNIIIGSIAGAVLVAAIVLGGTGWGFKNIRRRGRSGGATRTRPLEQKLI  
 SEEDLAANDILDYKDDDDKV

**Purity** > 80% as determined by SDS-PAGE and Coomassie blue staining

**Stability** Stable for 3 months from receipt of products under proper storage and handling conditions.

**Storage** Store at -80 centigrade. Avoid repeated freeze-thaw cycles.

**Concentration** 50 µg/mL as determined by BCA

**Storage Buffer** 100 mM glycine, 25 mM Tris-HCl, pH 7.3.

## GENE INFORMATION

**Gene Name** ADAM11 ADAM metalloproteinase domain 11 [ Homo sapiens (human) ]

**Official Symbol** ADAM11

**Synonyms** ADAM11; ADAM metalloproteinase domain 11; a disintegrin and metalloproteinase

 Tel: 1-631-559-9269 1-516-512-3133

 Email: [info@creative-biomart.com](mailto:info@creative-biomart.com)  Fax: 1-631-938-8127

 45-1 Ramsey Road, Shirley, NY 11967, USA

domain 11, MDC; disintegrin and metalloproteinase domain-containing protein 11; metalloproteinase like; disintegrin like; cysteine rich protein; ADAM 11; MDC;

**Gene ID** 4185

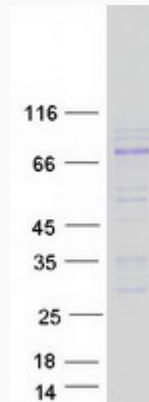
**mRNA Refseq** NM\_002390

**Protein Refseq** NP\_002381

**MIM** 155120

**UniProt ID** O75078

**SDS-PAGE**



 Tel: 1-631-559-9269 1-516-512-3133

 Email: [info@creative-biomart.com](mailto:info@creative-biomart.com)  Fax: 1-631-938-8127

 45-1 Ramsey Road, Shirley, NY 11967, USA