

Active Recombinant Human ADAM12 protein, His-tagged

Cat. No. ADAM12-2179H Lot. No. (See product label)

SPECIFICATION

Product Overview	Active Recombinant Human ADAM12 protein(NP_003465.3)(Met 1-Ser 513) was expressed in HEK293, fused with a polyhistidine tag at the C-terminus.
Species	Human
Source	HEK293
ProteinLength	1-513 aa
Form	Lyophilized from sterile PBS, pH 7.4.
Bio-activity	Measured by its binding ability in a functional ELISA. Immobilized human ADAM12-His at 10 µg/ml (100 µl/well) can bind biotinylated mouse FLRG-His with a linear range of 0.31-1.25 µg/ml.
Molecular Mass	The recombinant human ADAM12 consists of 496 amino acids and predicts a molecular mass of 55.2 kDa. As a result of glycosylation, rhADAM12 migrates as three bands with apparent molecular mass of 27, 55 and 72 kDa corresponding to the peptide, the mature form and the form respectively in SDS-PAGE under reducing conditions.
Endotoxin	< 1.0 EU per µg of the protein as determined by the LAL method.
Purity	> 98 % as determined by SDS-PAGE

 Tel: 1-631-559-9269 1-516-512-3133

 Email: info@creative-biomart.com  Fax: 1-631-938-8127

 45-1 Ramsey Road, Shirley, NY 11967, USA

Storage	Store it under sterile conditions at -20°C to -80°C upon receiving. Recommend to aliquot the protein into smaller quantities for optimal storage. Avoid repeated freeze-thaw cycles.
Reconstitution	It is recommended that sterile water be added to the vial to prepare a stock solution of 0.2 ug/ul. Centrifuge the vial at 4°C before opening to recover the entire contents.
protein Refseq-Weblink	http://www.ncbi.nlm.nih.gov/protein/NP_003465.3
Unit ID	O43184
Unit ID-Weblink	http://www.uniprot.org/uniprot/O43184

GENE INFORMATION

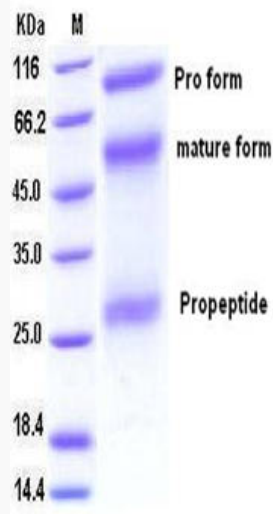
Gene Name	ADAM12 ADAM metalloproteinase domain 12 [Homo sapiens]
Official Symbol	ADAM12
Synonyms	ADAM12; ADAM metalloproteinase domain 12; a disintegrin and metalloproteinase domain 12 (meltrin alpha); disintegrin and metalloproteinase domain-containing protein 12; MCMPMltna; meltrin alpha; MLTN; meltrin-alpha; MCMP; MLTNA;
Gene ID	8038
mRNA Refseq	NM_003474
protein Refseq	NP_003465
MIM	602714

 Tel: 1-631-559-9269 1-516-512-3133

 Email: info@creative-biomart.com  Fax: 1-631-938-8127

 45-1 Ramsey Road, Shirley, NY 11967, USA

SDS-PAGE



 Tel: 1-631-559-9269 1-516-512-3133

 Email: info@creative-biomart.com  Fax: 1-631-938-8127

 45-1 Ramsey Road, Shirley, NY 11967, USA