

## Recombinant Human ADAM12 Protein, GST-tagged

Cat. No. ADAM12-274H Lot. No. (See product label)

### SPECIFICATION

<b>Product Overview</b>	Human ADAM12 full-length ORF ( AAH60804.1, 1 a.a. - 737 a.a.) recombinant protein with GST-tag at N-terminal.
<b>Species</b>	Human
<b>Source</b>	Wheat Germ
<b>Description</b>	This gene encodes a member of a family of proteins that are structurally related to snake venom disintegrins and have been implicated in a variety of biological processes involving cell-cell and cell-matrix interactions, including fertilization, muscle development, and neurogenesis. Expression of this gene has been used as a maternal serum marker for pre-natal development. Alternative splicing results in multiple transcript variants encoding different isoforms. Shorter isoforms are secreted, while longer isoforms are membrane-bound form. [provided by RefSeq, Jan 2014]
<b>Molecular Mass</b>	106.8 kDa
<b>AA Sequence</b>	MAARPLPVSPARALLLAGALLAPCEARGVSLWNQGRADEVVSASVRSGDLWIPV KSFDSKNHPEVLNIRLQRESKELIINLERNEGLIASSFTETHYLQDGTDVSLARNYTG HCYYHGHVIRGYSDSAVSLSTCSGLRGLIVFENESYVLEPMKSATNRYKLFPAKKLKS VRGSCGSHHNTPNLAAKNVFPPTSQTWARRHKRETLKATKYVELVIVADNREFQRQ GKDLEKVKQRLIEIANHVDFYRPLNIRIVLVGVEVWVNDMDKCSVSQDPFTSLHEFLD WRKMKLLPRKSHDNAQLVSGVYFQGTIGMAPIMSMCTADQSGGIVMDHSDNPLG AAVTLAHELGHNFNMGHDTLDRGCSCQMAVEKGGCIMNASTGYPFPMVFSSCSRK

 Tel: 1-631-559-9269 1-516-512-3133

 Email: [info@creative-biomart.com](mailto:info@creative-biomart.com)  Fax: 1-631-938-8127

 45-1 Ramsey Road, Shirley, NY 11967, USA

DLETSLEKGMGVCLFNLPEVRESFQQKCGNRFVEEGEECDCEPEECMNRCCN  
 ATTCTLKPDVAHGLCCEDCQLKPAGTACRDSSNSCDLPEFCTGASPHCPANVYL  
 HDGHSCQDVGICYNGICQTHEQQCVTLWGPAGKAPGICFERVNSAGDPYGN  
 GKVSKSSFACEMRDAKCGKIQCQGGASRPVIGTNAVSIETNIPLQQGGRILCRGTH  
 VYLGDDMPDPLVLAGTKCADGKICLNRCQNISVFGVHECAMQCHGRGVCNNRK  
 NCHCEAHWAPPFCDFGFGGSTDSGPIRQAGKEARQEAESNRERGGQEPVGS  
 QEHASTASLTLI

<b>Applications</b>	Enzyme-linked Immunoabsorbent Assay Western Blot (Recombinant protein) Antibody Production Protein Array
<b>Notes</b>	Best use within three months from the date of receipt of this protein.
<b>Storage</b>	Store at -80 centigrade. Aliquot to avoid repeated freezing and thawing.
<b>Storage Buffer</b>	50 mM Tris-HCl, 10 mM reduced Glutathione, pH=8.0 in the elution buffer.

## GENE INFORMATION

<b>Gene Name</b>	ADAM12 ADAM metalloproteinase domain 12 [ Homo sapiens ]
<b>Official Symbol</b>	ADAM12
<b>Synonyms</b>	ADAM12; ADAM metalloproteinase domain 12; a disintegrin and metalloproteinase domain 12 (meltrin alpha); disintegrin and metalloproteinase domain-containing protein 12; MCMPMltna; meltrin alpha; MLTN; meltrin-alpha; MCMP; MLTNA;
<b>Gene ID</b>	8038

 Tel: 1-631-559-9269 1-516-512-3133

 Email: [info@creative-biomart.com](mailto:info@creative-biomart.com)  Fax: 1-631-938-8127

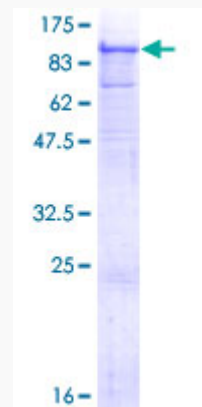
 45-1 Ramsey Road, Shirley, NY 11967, USA

mRNA Refseq [NM\\_003474](#)

Protein Refseq [NP\\_003465](#)

MIM [602714](#)

UniProt ID [O43184](#)



12.5% SDS-PAGE Stained with Coomassie Blue.

 Tel: 1-631-559-9269 1-516-512-3133

 Email: [info@creative-biomart.com](mailto:info@creative-biomart.com)  Fax: 1-631-938-8127

 45-1 Ramsey Road, Shirley, NY 11967, USA