

Recombinant Human ADAM12 Protein, His-tagged

Cat. No. ADAM12-74H Lot. No. (See product label)

SPECIFICATION

Product Overview	Recombinant Human ADAM12 Protein (Arg29-Ser513) with N-His tag was expressed in CHO.
Species	Human
Source	CHO
ProteinLength	Arg29-Ser513
Description	This gene encodes a member of a family of proteins that are structurally related to snake venom disintegrins and have been implicated in a variety of biological processes involving cell-cell and cell-matrix interactions, including fertilization, muscle development, and neurogenesis. Expression of this gene has been used as a maternal serum marker for pre-natal development. Alternative splicing results in multiple transcript variants encoding different isoforms. Shorter isoforms are secreted, while longer isoforms are membrane-bound form.
Form	Freeze-dried powder
Molecular Mass	Predicted Molecular Mass: 55.3 kDa Accurate Molecular Mass: \
Purity	> 95%
Applications	Positive Control; Immunogen; SDS-PAGE; WB.

 Tel: 1-631-559-9269 1-516-512-3133

 Email: info@creative-biomart.com  Fax: 1-631-938-8127

 45-1 Ramsey Road, Shirley, NY 11967, USA

Stability	The thermal stability is described by the loss rate. The loss rate was determined by accelerated thermal degradation test, that is, incubate the protein at 37 centigrade for 48h, and no obvious degradation and precipitation were observed. The loss rate is less than 5% within the expiration date under appropriate storage condition.
Storage	Avoid repeated freeze/thaw cycles. Store at 2-8 centigrade for one month. Aliquot and store at -80 centigrade for 12 months.
Storage Buffer	PBS, pH7.4, containing 0.01% SKL, 1 mM DTT, 5% Trehalose and Proclin300.
Reconstitution	Reconstitute in sterile water to a concentration of 0.1-1.0 mg/mL. Do not vortex.

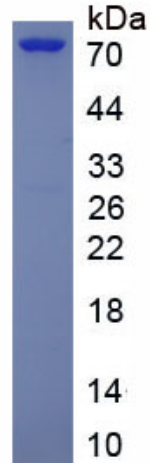
GENE INFORMATION

Gene Name	ADAM12 ADAM metallopeptidase domain 12 [Homo sapiens (human)]
Official Symbol	ADAM12
Synonyms	ADAM12; ADAM metallopeptidase domain 12; a disintegrin and metalloproteinase domain 12 (meltrin alpha); disintegrin and metalloproteinase domain-containing protein 12; MCMPItna; meltrin alpha; MLTN; meltrin-alpha; MCMP; MLTNA
Gene ID	8038
mRNA Refseq	NM_003474
Protein Refseq	NP_003465
MIM	602714
UniProt ID	O43184

 Tel: 1-631-559-9269 1-516-512-3133

 Email: info@creative-biomart.com  Fax: 1-631-938-8127

 45-1 Ramsey Road, Shirley, NY 11967, USA



 Tel: 1-631-559-9269 1-516-512-3133

 Email: info@creative-biomart.com  Fax: 1-631-938-8127

 45-1 Ramsey Road, Shirley, NY 11967, USA