

Recombinant Human ADAM15 Protein (207-452 aa), GST-tagged

Cat. No. ADAM15-1186H Lot. No. (See product label)

SPECIFICATION

Product Overview	Recombinant Human ADAM15 Protein (207-452 aa) is produced by E. coli expression system. This protein is fused with a GST tag at the N-terminal. Research Area: Cancer. Protein Description: Partial.
Species	Human
Source	E.coli
ProteinLength	207-452 aa
Description	Active metalloproteinase with gelatinolytic and collagenolytic activity. Plays a role in the wound healing process. Mediates both heterotypic intraepithelial cell/T-cell interactions and homotypic T-cell aggregation. Inhibits beta-1 integrin-mediated cell adhesion and migration of airway smooth muscle cells. Suppresses cell motility on or towards fibronectin possibly by driving alpha-v/beta-1 integrin (ITAGV-ITGB1) cell surface expression via ERK1/2 inactivation. Cleaves E-cadherin in response to growth factor deprivation. Plays a role in glomerular cell migration. Plays a role in pathological neovascularization. May play a role in cartilage remodeling. May be proteolytically processed, during sperm epididymal maturation and the acrosome reaction. May play a role in sperm-egg binding through its disintegrin domain.
Form	Tris-based buffer,50% glycerol
Molecular Mass	53.6 kDa

 Tel: 1-631-559-9269 1-516-512-3133

 Email: info@creative-biomart.com  Fax: 1-631-938-8127

 45-1 Ramsey Road, Shirley, NY 11967, USA

AA Sequence	DVVTETKTVELVIVADHSEAQKYRDFQHLLNRTLEVALLLDTFFRPLNVRVALVBLEA WTQRDLVEISPNPAVTLENFLHWRRRAHLLPRLPHDSAQLVTGTSTFSGPTVGMAIQN SICSPDFSGGVNMDHSTSILGVASSIAHELGHSLGLDHDLPGNPCPCPGPAPAKTCI MEASTDFLPGLNFSNCSRRALEKALLDGMGSLFERLPSLPPMAAFCGNMFVEPGE QCDCGFLDDCVDPCCDLSLT
Purity	> 90% as determined by SDS-PAGE.
Notes	Repeated freezing and thawing is not recommended. Store working aliquots at 4 centigrade for up to one week.
Storage	The shelf life is related to many factors, storage state, buffer ingredients, storage temperature and the stability of the protein itself. Generally, the shelf life of liquid form is 6 months at -20 centigrade/-80 centigrade. The shelf life of lyophilized form is 12 months at -20 centigrade/-80 centigrade.
Concentration	A hardcopy of COA with reconstitution instruction is sent along with the products. Please refer to it for detailed information.

GENE INFORMATION

Gene Name	ADAM15 ADAM metallopeptidase domain 15 [Homo sapiens]
Official Symbol	ADAM15
Synonyms	ADAM15; MDC15; metargidin; MDC-15; ADAM 15;
Gene ID	8751
mRNA Refseq	NM_003815

 Tel: 1-631-559-9269 1-516-512-3133

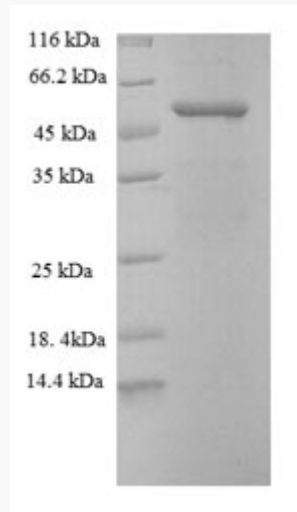
 Email: info@creative-biomart.com  Fax: 1-631-938-8127

 45-1 Ramsey Road, Shirley, NY 11967, USA

Protein Refseq NP_003806

MIM 605548

UniProt ID Q13444



(Tris-Glycine gel) Discontinuous SDS-PAGE (reduced) with 5% enrichment gel and 15% separation gel.

 Tel: 1-631-559-9269 1-516-512-3133

 Email: info@creative-biomart.com  Fax: 1-631-938-8127

 45-1 Ramsey Road, Shirley, NY 11967, USA