

Recombinant Human ADAM15 Protein, GST-tagged

Cat. No. ADAM15-276H Lot. No. (See product label)

SPECIFICATION

Product Overview	Human ADAM15 full-length ORF (NP_997074.1, 1 a.a. - 772 a.a.) recombinant protein with GST-tag at N-terminal.
Species	Human
Source	Wheat Germ
Description	<p>The protein encoded by this gene is a member of the ADAM (a disintegrin and metalloproteinase) protein family. ADAM family members are type I transmembrane glycoproteins known to be involved in cell adhesion and proteolytic ectodomain processing of cytokines and adhesion molecules. This protein contains multiple functional domains including a zinc-binding metalloprotease domain, a disintegrin-like domain, as well as a EGF-like domain. Through its disintegrin-like domain, this protein specifically interacts with the integrin beta chain, beta 3. It also interacts with Src family protein-tyrosine kinases in a phosphorylation-dependent manner, suggesting that this protein may function in cell-cell adhesion as well as in cellular signaling. Multiple alternatively spliced transcript variants encoding distinct isoforms have been observed. [provided by RefSeq, Jul 2008]</p>
Molecular Mass	110.1 kDa
AA Sequence	<p>MRLALLWALGLLGAGSPLPSWPLPNIGGTEEQQAESEKAPREPLEPQVLQDDLPISL KKVLQTSLEPLRIKLELDGDSHILELLQNRELVPGRPTLVWYQPDGTRVVSEGHTL ENCCYQGRVIRGYAGSWVSICTCSGLRGLVVLTPERSYTLQGGDLQGPPIISRIQD</p>

 Tel: 1-631-559-9269 1-516-512-3133

 Email: info@creative-biomart.com  Fax: 1-631-938-8127

 45-1 Ramsey Road, Shirley, NY 11967, USA

LHLPGHTCALSWRESVHTQKPPEHPLGQRHIRRRRDVVTETKTVELVIVADHSEAQ
 KYRDFQHLLNRTLEVALLLDFFRPLNVRVALVGLAWTQRDLVEISPNPAVTLENFL
 HWRRAHLLPRLPHDSAQLVTGTSFSGPTVGMAIQNSICSPDFSGGVNMDHSTSILG
 VASSIAHELGHSLGLDHDLPGNPCPCPGPAPAKTCIMEASTDFLPGLNFSNCSRRAL
 EKALLDGMGSCLFERLPSLPPMAAFCGNMFVEPGEQCDCGFLDDCVDPCCDSLTC
 QLRPGAQCASDGPCCQNCQLRPSGWQCRPTRGDCDLPEFCPGDSSQCPPDVSL
 GDGEP CAGGQAVCMHGRCASYAQQCQSLWGPQAQPAAPLCLQTANTRGNAFGS
 CGRNPSGSYVSCTPRDAICGQLQCQTGRTQPLLGSIRDLLWETIDVNGTELNCSWV
 HLDLGS DVAQPLLTLPGTACGPGLVCIDHRCQRVDLLGAQECSRKCHGHGVCD SN
 RHCYCEE GWAPPDCTTQLKATSSLTGLLLSLLVLLVLM LGASYWYRARLHQRLC
 QLKGP TCQYSLRGQPSPHPQGS HCLPTPRAG AHRVTCPAQGLESRP

Applications

Enzyme-linked Immunoabsorbent Assay
 Western Blot (Recombinant protein)
 Antibody Production
 Protein Array

Notes

Best use within three months from the date of receipt of this protein.

Storage

Store at -80 centigrade. Aliquot to avoid repeated freezing and thawing.

Storage Buffer

50 mM Tris-HCl, 10 mM reduced Glutathione, pH=8.0 in the elution buffer.

GENE INFORMATION

Gene Name

[ADAM15 ADAM metalloproteinase domain 15 \[Homo sapiens \]](#)

Official Symbol

[ADAM15](#)

Synonyms

ADAM15; ADAM metalloproteinase domain 15; a disintegrin and metalloproteinase domain 15 (metargidin); disintegrin and metalloproteinase domain-containing protein

 Tel: 1-631-559-9269 1-516-512-3133

 Email: info@creative-biomart.com  Fax: 1-631-938-8127

 45-1 Ramsey Road, Shirley, NY 11967, USA

15; MDC15; metargidin; MDC-15; ADAM 15; metalloprotease RGD disintegrin protein; metalloproteinase-like, disintegrin-like, and cysteine-rich protein 15;

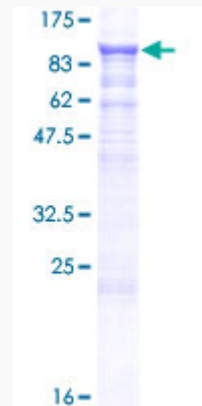
Gene ID 8751

mRNA Refseq NM_003815

Protein Refseq NP_003806

MIM 605548

UniProt ID Q13444



12.5% SDS-PAGE Stained with Coomassie Blue.

 Tel: 1-631-559-9269 1-516-512-3133

 Email: info@creative-biomart.com  Fax: 1-631-938-8127

 45-1 Ramsey Road, Shirley, NY 11967, USA