

## Recombinant Human ADAM15 Protein, GST-tagged

Cat. No. ADAM15-277H Lot. No. (See product label)

### SPECIFICATION

<b>Product Overview</b>	Human ADAM15 partial ORF ( AAH14566, 301 a.a. - 410 a.a.) recombinant protein with GST-tag at N-terminal.
<b>Species</b>	Human
<b>Source</b>	Wheat Germ
<b>Description</b>	<p>The protein encoded by this gene is a member of the ADAM (a disintegrin and metalloproteinase) protein family. ADAM family members are type I transmembrane glycoproteins known to be involved in cell adhesion and proteolytic ectodomain processing of cytokines and adhesion molecules. This protein contains multiple functional domains including a zinc-binding metalloprotease domain, a disintegrin-like domain, as well as a EGF-like domain. Through its disintegrin-like domain, this protein specifically interacts with the integrin beta chain, beta 3. It also interacts with Src family protein-tyrosine kinases in a phosphorylation-dependent manner, suggesting that this protein may function in cell-cell adhesion as well as in cellular signaling. Multiple alternatively spliced transcript variants encoding distinct isoforms have been observed. [provided by RefSeq, Jul 2008]</p>
<b>Molecular Mass</b>	37.73 kDa
<b>AA Sequence</b>	AQLVTGTSFSGPTVGMAIQNSICSPDFSGGVNMDHSTSILGVASSIAHELGHSLGLD HDLPGNSCPCPGPAPAKTCIMEASTDFLPLNFSNCSRRALEKALLDGMGSCL
<b>Applications</b>	Enzyme-linked Immunoabsorbent Assay

 Tel: 1-631-559-9269 1-516-512-3133

 Email: [info@creative-biomart.com](mailto:info@creative-biomart.com)  Fax: 1-631-938-8127

 45-1 Ramsey Road, Shirley, NY 11967, USA

	Western Blot (Recombinant protein) Antibody Production Protein Array
<b>Notes</b>	Best use within three months from the date of receipt of this protein.
<b>Storage</b>	Store at -80 centigrade. Aliquot to avoid repeated freezing and thawing.
<b>Storage Buffer</b>	50 mM Tris-HCl, 10 mM reduced Glutathione, pH=8.0 in the elution buffer.

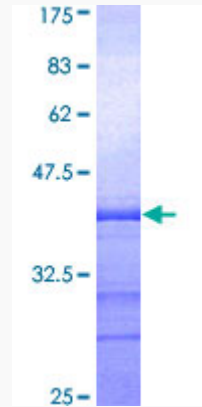
## GENE INFORMATION

<b>Gene Name</b>	<a href="#">ADAM15 ADAM metalloproteinase domain 15 [ Homo sapiens ]</a>
<b>Official Symbol</b>	<a href="#">ADAM15</a>
<b>Synonyms</b>	ADAM15; ADAM metalloproteinase domain 15; a disintegrin and metalloproteinase domain 15 (metargidin); disintegrin and metalloproteinase domain-containing protein 15; MDC15; metargidin; MDC-15; ADAM 15; metalloproteinase RGD disintegrin protein; metalloproteinase-like, disintegrin-like, and cysteine-rich protein 15;
<b>Gene ID</b>	<a href="#">8751</a>
<b>mRNA Refseq</b>	<a href="#">NM_003815</a>
<b>Protein Refseq</b>	<a href="#">NP_003806</a>
<b>MIM</b>	<a href="#">605548</a>
<b>UniProt ID</b>	<a href="#">Q13444</a>

 Tel: 1-631-559-9269 1-516-512-3133

 Email: [info@creative-biomart.com](mailto:info@creative-biomart.com)  Fax: 1-631-938-8127

 45-1 Ramsey Road, Shirley, NY 11967, USA



12.5% SDS-PAGE Stained with Coomassie Blue.

 Tel: 1-631-559-9269 1-516-512-3133

 Email: [info@creative-biomart.com](mailto:info@creative-biomart.com)  Fax: 1-631-938-8127

 45-1 Ramsey Road, Shirley, NY 11967, USA