

## Recombinant Human ADAM2 Protein, GST-tagged

**Cat. No.** ADAM2-279H    **Lot. No.** (See product label)

### SPECIFICATION

<b>Product Overview</b>	Human ADAM2 full-length ORF ( AAH34957.1, 1 a.a. - 716 a.a.) recombinant protein with GST-tag at N-terminal.
<b>Species</b>	Human
<b>Source</b>	Wheat Germ
<b>Description</b>	This gene encodes a member of the ADAM (a disintegrin and metalloprotease domain) family. Members of this family are membrane-anchored proteins structurally related to snake venom disintegrins, and have been implicated in a variety of biological processes involving cell-cell and cell-matrix interactions, including fertilization, muscle development, and neurogenesis. The encoded protein is a subunit of an integral sperm membrane glycoprotein called fertilin, which plays an important role in sperm-egg interactions. Alternative splicing results in multiple transcript variants encoding different isoforms. [provided by RefSeq, May 2013]
<b>Molecular Mass</b>	104.39 kDa
<b>AA Sequence</b>	MWRVLFLLSGLGGLRMDSNFDSLVPVQITVPEKIRSIIEGIESQASYKIVIEGKPYTVN LMQKNFLPHNFRVYSYSGTGIMKPLDQDFQNFCHYQGYIEGYPKSVVMVSTCTGLR GVLQFENVSYGIEPLESSVGFVHVIYQVKHKKADVSLYNEKDIESRDLSFKLQSVEYN HMGSDTTVVAQKVFQLIGLTNAIFVSFNITILSSLELWIDENKIATTGEANELLHTFLR WKTSYLVLRPHDVAFLLVYREKSNYVGATFQGKMCDANYAGGVVLHPRTISLES LA VILAQLLSLSMGITYDDINKCQCSCGAVCIMNPEAIHFSGVKIFSNCSFEDFAHFISKQK

 Tel: 1-631-559-9269    1-516-512-3133

 Email: [info@creative-biomart.com](mailto:info@creative-biomart.com)     Fax: 1-631-938-8127

 45-1 Ramsey Road, Shirley, NY 11967, USA

SQCLHNQPRLDPPFFKQQAVCGNAKLEAGEECDGTEQDCALIGETCCDIATCRFKA  
 GSNCAEGPCCENCLFMSKERMCRPSFEEDLPEYCNCGSSASCPENHYVQTGHPC  
 GLNQWICIDGVCMSGDKQCTDTFGKEVEFGPSECYSHLNSKTDVSGNCGISDSGYT  
 QCEADNLQCGKLUCKYVVGKFLQIPRATIYANISGHLCLIAVEFASDHADSQKMWIKDG  
 TSCGSNKVCRNQRVSSSYLGYDCTTDKCNDRGVCNKKHCHCSASYLPPDCSV  
 QSDLWPGGSIDSGNFPPVAIPARLPERRYIENIYHSPMRWPFLLFIPFFIIFCVLIAM  
 VKVNFQRKKWRTEYSSDEQPESESEPKG

<b>Applications</b>	Enzyme-linked Immunoabsorbent Assay Western Blot (Recombinant protein) Antibody Production Protein Array
---------------------	---

<b>Notes</b>	Best use within three months from the date of receipt of this protein.
--------------	--

<b>Storage</b>	Store at -80 centigrade. Aliquot to avoid repeated freezing and thawing.
----------------	--

<b>Storage Buffer</b>	50 mM Tris-HCl, 10 mM reduced Glutathione, pH=8.0 in the elution buffer.
-----------------------	--

## GENE INFORMATION

<b>Gene Name</b>	ADAM2 ADAM metalloproteinase domain 2 [ Homo sapiens ]
------------------	--

<b>Official Symbol</b>	ADAM2
------------------------	-------

<b>Synonyms</b>	ADAM2; ADAM metalloproteinase domain 2; fertilin beta , FTNB; disintegrin and metalloproteinase domain-containing protein 2; cancer/testis antigen 15; CT15; PH 30b; PH30; PH-30; ADAM 2; PH30-beta; fertilin beta; fertilin subunit beta; FTNB; CRYN1; CRYN2; PH-30b;
-----------------	--

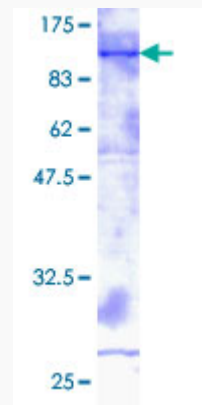
<b>Gene ID</b>	2515
----------------	------

 Tel: 1-631-559-9269 1-516-512-3133


 Email: [info@creative-biomart.com](mailto:info@creative-biomart.com)  Fax: 1-631-938-8127

 45-1 Ramsey Road, Shirley, NY 11967, USA

mRNA Refseq	NM_001464
Protein Refseq	NP_001455
MIM	601533
UniProt ID	Q99965



12.5% SDS-PAGE Stained with Coomassie Blue.

 Tel: 1-631-559-9269 1-516-512-3133

 Email: [info@creative-biomart.com](mailto:info@creative-biomart.com)  Fax: 1-631-938-8127

 45-1 Ramsey Road, Shirley, NY 11967, USA