

Recombinant Human ADAM2 Protein, GST-tagged

Cat. No. ADAM2-280H **Lot. No.** (See product label)

SPECIFICATION

Product Overview	Human ADAM2 partial ORF (NP_001455, 376 a.a. - 475 a.a.) recombinant protein with GST-tag at N-terminal.
Species	Human
Source	Wheat Germ
Description	This gene encodes a member of the ADAM (a disintegrin and metalloprotease domain) family. Members of this family are membrane-anchored proteins structurally related to snake venom disintegrins, and have been implicated in a variety of biological processes involving cell-cell and cell-matrix interactions, including fertilization, muscle development, and neurogenesis. The encoded protein is a subunit of an integral sperm membrane glycoprotein called fertilin, which plays an important role in sperm-egg interactions. Alternative splicing results in multiple transcript variants encoding different isoforms. [provided by RefSeq, May 2013]
Molecular Mass	36.74 kDa
AA Sequence	RLDPFFKQQAVCGNAKLEAGEECDGTEQDCALIGETCCDIATCRFKAGSNCAEGP CCENCLFMSKERMCRPSFEEDLPEYCNCGSSASCPENHYVQTGH
Applications	Enzyme-linked Immunoabsorbent Assay Western Blot (Recombinant protein) Antibody Production Protein Array

 Tel: 1-631-559-9269 1-516-512-3133

 Email: info@creative-biomart.com  Fax: 1-631-938-8127

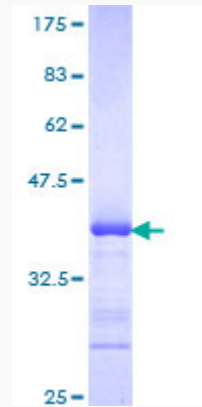
 45-1 Ramsey Road, Shirley, NY 11967, USA

Notes	Best use within three months from the date of receipt of this protein.
Storage	Store at -80 centigrade. Aliquot to avoid repeated freezing and thawing.
Storage Buffer	50 mM Tris-HCl, 10 mM reduced Glutathione, pH=8.0 in the elution buffer.
GENE INFORMATION	
Gene Name	ADAM2 ADAM metalloproteinase domain 2 [Homo sapiens]
Official Symbol	ADAM2
Synonyms	ADAM2; ADAM metalloproteinase domain 2; fertilin beta , FTNB; disintegrin and metalloproteinase domain-containing protein 2; cancer/testis antigen 15; CT15; PH 30b; PH30; PH-30; ADAM 2; PH30-beta; fertilin beta; fertilin subunit beta; FTNB; CRYN1; CRYN2; PH-30b;
Gene ID	2515
mRNA Refseq	NM_001464
Protein Refseq	NP_001455
MIM	601533
UniProt ID	Q99965

 Tel: 1-631-559-9269 1-516-512-3133

 Email: info@creative-biomart.com  Fax: 1-631-938-8127

 45-1 Ramsey Road, Shirley, NY 11967, USA



12.5% SDS-PAGE Stained with Coomassie Blue.

 Tel: 1-631-559-9269 1-516-512-3133

 Email: info@creative-biomart.com  Fax: 1-631-938-8127

 45-1 Ramsey Road, Shirley, NY 11967, USA