

## Recombinant Human ADAM8 Protein, His tagged

**Cat. No.** ADAM8-001H    **Lot. No.** (See product label)

### SPECIFICATION

**Product Overview**      Recombinant Human ADAM8 Protein with His tag was expressed in Insect Cells.

**Species**                      Human

**Source**                        Insect Cells


**ProteinLength**            158-653 aa

**Description**

This gene encodes a member of the ADAM (a disintegrin and metalloprotease domain) family. Members of this family are membrane-anchored proteins structurally related to snake venom disintegrins, and have been implicated in a variety of biological processes involving cell-cell and cell-matrix interactions, including fertilization, muscle development, and neurogenesis. The protein encoded by this gene may be involved in cell adhesion during neurodegeneration, and it is thought to be a target for allergic respiratory diseases, including asthma. Alternative splicing results in multiple transcript variants.

**AASequence**

```
MEHLLQTAGTCGVSDDSLGSLLGPRTAAVFRPRPGDSLPSRETRYVELYVVVDNAE
FQMLGSEAAVRHRVLEVVNHVDKLYQKLNFRVVLVGLIWNQDRFHVSPDPSVTL
ENLLTWQARQRTRRHLHDNVQLITGVDFGTGTTVGFARVSAMCSHSSGAVNQDHSK
NPVGVACTMAHEMGHNLGMDHDENVQGCRCQERFEAGRCIMAGSIGSSFPRMFS
DCSQAYLESFLERPQSVCLANAPDLSHLVGGPVCGNLFVERGEQCDCGPPEDCRN
RCCNSTTCQLAEGAQCAHGTCCQECKVKPAGELCRPKKDMCDLEEFCDGRHPEC
PEDAFQENGTPCSGGYCYNGACPTLAQQCQAFWGPGGQAAEESCFSYDILPGCK
```

 Tel: 1-631-559-9269    1-516-512-3133

 Email: [info@creative-biomart.com](mailto:info@creative-biomart.com)     Fax: 1-631-938-8127

 45-1 Ramsey Road, Shirley, NY 11967, USA

ASRYRADMCGVLQCKGGQQPLGRAICIVDVCHALTTEDGTAYEPVPEGTRCGPEKV  
 CWKGRQCQDLHVYRSSNCSAQCHNHGVCNHKQECHCHAGWAPPHCAKLLTEVHA  
 ASGSHHHHHHHH

**Molecular Mass** 55 kDa

**Endotoxin** < 1 EU/μg of protein (determined by LAL method)

**Purity** > 80% by SDS-PAGE

**Storage** Store it under sterile conditions at -20 to -80 centigrade. It is recommended that the protein be aliquoted for optimal storage. Avoid repeated freeze-thaw cycles.

**Storage Buffer** Sterile PBS, pH7.4, 0.05% SKL

**Concentration** 1 mg/mL by BCA

## GENE INFORMATION

**Gene Name** [ADAM8 ADAM metalloproteinase domain 8 \[ Homo sapiens \(human\) \]](#)

**Official Symbol** [ADAM8](#)

**Synonyms** ADAM8; ADAM metalloproteinase domain 8; a disintegrin and metalloproteinase domain 8; disintegrin and metalloproteinase domain-containing protein 8; CD156; MS2; cell surface antigen MS2; human leukocyte differentiation antigen; MGC134985

**Gene ID** [101](#)

**mRNA Refseq** [NM\\_001109](#)

 Tel: 1-631-559-9269 1-516-512-3133

 Email: [info@creative-biomart.com](mailto:info@creative-biomart.com)  Fax: 1-631-938-8127

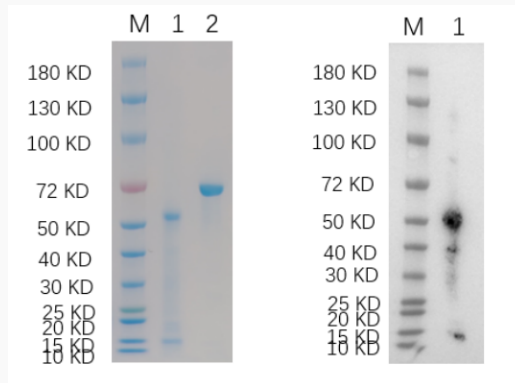
 45-1 Ramsey Road, Shirley, NY 11967, USA

**Protein Refseq** NP\_001100


**MIM** 602267

**UniProt ID** P78325


**SDS-PAGE and WB**



Reducing 4%-20% SDS-PAGE (CBB stained) and WB (Anti-His Mouse Monoclonal Antibody) analysis profiles of purified ADAM8. 1. ADAM8: 1  $\mu$ g 2. BSA: 1  $\mu$ g

 Tel: 1-631-559-9269 1-516-512-3133

 Email: [info@creative-biomart.com](mailto:info@creative-biomart.com)  Fax: 1-631-938-8127

 45-1 Ramsey Road, Shirley, NY 11967, USA