

Recombinant Human ADAM8 Protein, C-His-tagged

Cat. No. ADAM8-004H Lot. No. (See product label)

SPECIFICATION

Product Overview	Recombinant Human ADAM8 Protein with C-His tag was expressed in E. coli.
Species	Human
Source	E.coli
Description	ADAM8, possible involvement in extravasation of leukocytes.
Molecular Mass	~70 kDa
AA Sequence	<p>IAPSRPWALMEQYEVVLPWRLPGPRVRRALPSHLGLHPERVSYVLGATGHNFTLHL RKNRDLLGSGYTETYTAANGSEVTEQPRGQDHCIFYQGHVEGYPDSAASLSTCAGL RGFFQVGS DLHLIEPLDEGGEGGRHAVYQAEHLLQTAGTCGVSDDSLGSLLGPRTA AVFRPRPGDSLPSRETRYVELYVVVDNAEFQMLGSEAAVRHRVLEVNVHVDKLYQK LNFRRVVLVGLIWN SQDRFHVSPDPSVTLENLLTWQARQRTRRHLHDNVQLITGVD FTGTTVGFARVSAMCSHSSGAVNQDHSKNPVG VACTMAHEM GHNLGMDHDENVQ GCRCQERFEAGRCIMAGSIGSSFPRMFSDCSQAYLESFLERPQSVCLANAPDLSHL VGGPVCGNLFVERGEQCDCGPPEDCRNRCCNSTTCQLAEGAQCAHGTCCECKV KPAGELCRPKKDMCDLEEFCDGRHPECPEDAFQENGTPCSGGYCYNGACPTLAQ QCQAFWGP GGQAAEESCF SYDILPGCKASRYRADMCGVLQCKGGQQPLGRAICIV DVCHALTTEDGTAYEPVPEGTRCGPEKVCWKGRQCQLHVYRSSNCSAQCHNHGV CNHKQECHCHAGWAPPHCAKLLTEVHAASGSLP</p>
Purity	Transferred into competent cells and the supernatant was purified by NI column affinity chromatography and the purity is > 85% (by SDS-PAGE).

 Tel: 1-631-559-9269 1-516-512-3133

 Email: info@creative-biomart.com  Fax: 1-631-938-8127

 45-1 Ramsey Road, Shirley, NY 11967, USA

Notes	For research use only, not for use in diagnostic procedure.
Storage	Store at 4 centigrade short term. Aliquot and store at -20 centigrade long term. Avoid freeze-thaw cycles.
Concentration	≥0.5 mg/mL
Storage Buffer	PBS, 4M Urea, pH7.4

GENE INFORMATION

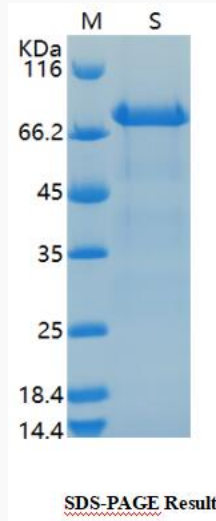
Gene Name	ADAM8 ADAM metallopeptidase domain 8 [Homo sapiens (human)]
Official Symbol	ADAM8
Synonyms	ADAM8; ADAM metallopeptidase domain 8; a disintegrin and metalloproteinase domain 8; disintegrin and metalloproteinase domain-containing protein 8; CD156; MS2; cell surface antigen MS2; human leukocyte differentiation antigen; MGC134985;
Gene ID	101
mRNA Refseq	NM_001109
Protein Refseq	NP_001100
MIM	602267
UniProt ID	P78325

 Tel: 1-631-559-9269 1-516-512-3133

 Email: info@creative-biomart.com  Fax: 1-631-938-8127

 45-1 Ramsey Road, Shirley, NY 11967, USA

SDS-PAGE



 Tel: 1-631-559-9269 1-516-512-3133

 Email: info@creative-biomart.com  Fax: 1-631-938-8127

 45-1 Ramsey Road, Shirley, NY 11967, USA