

## Recombinant Mouse ADAM8 protein, His-tagged

**Cat. No.** ADAM8-1305M    **Lot. No.** (See product label)

### SPECIFICATION

<b>Product Overview</b>	Recombinant Mouse ADAM8 protein(Q05910)(Pro17-Ser658), fused with C-terminal His tag, was expressed in HEK293.
<b>Species</b>	Mouse
<b>Source</b>	HEK293
<b>ProteinLength</b>	Pro17-Ser658
<b>Tag</b>	C-His
<b>Form</b>	Lyophilized from 0.22µm filtered solution in PBS (pH 7.4). Normally 8% trehalose is added as protectant before lyophilization.
<b>Bio-activity</b>	Measured by its ability to cleave a fluorogenic peptide substrate Mca-PLAQAV-Dpa-RSSSR-NH <sub>2</sub> . The specific activity is > 0.4 pmol/min/g.
<b>Molecular Mass</b>	The protein has a predicted MW of 71.7 kDa. Due to glycosylation, the protein migrates to 60-72 kDa and 35-45 kDa based on Tris-Bis PAGE result.
<b>Endotoxin</b>	Less than 1EU per µg by the LAL method.
<b>Purity</b>	> 95% as determined by Tris-Bis PAGE;> 95% as determined by HPLC
<b>Storage</b>	Reconstituted protein stable at -80°C for 12 months, 4°C for 1 week. Use a manual

 Tel: 1-631-559-9269    1-516-512-3133

 Email: [info@creative-biomart.com](mailto:info@creative-biomart.com)     Fax: 1-631-938-8127

 45-1 Ramsey Road, Shirley, NY 11967, USA

defrost freezer and avoid repeated freeze-thaw cycles.

**Reconstitution**

Centrifuge tubes before opening. Reconstituting to a concentration more than 100 µg/ml is recommended. Dissolve the lyophilized protein in distilled water.

**GENE INFORMATION****Gene Name**

[Adam8 a disintegrin and metallopeptidase domain 8 \[ Mus musculus \]](#)

**Official Symbol**

[ADAM8](#)

**Synonyms**

ADAM8; a disintegrin and metallopeptidase domain 8; disintegrin and metalloproteinase domain-containing protein 8; ADAM 8; cell surface antigen MS2; macrophage cysteine-rich glycoprotein; a disintegrin and metalloprotease domain 8; a disintegrin and metalloprotease domain (ADAM) 8; MS2; CD156; CD156a; E430039A18Rik;

**Gene ID**

[11501](#)

**mRNA Refseq**

[NM\\_007403](#)

**Protein Refseq**

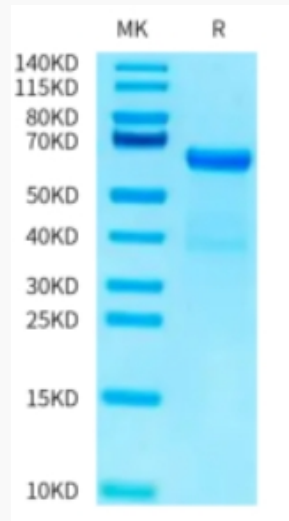
[NP\\_031429](#)

 Tel: 1-631-559-9269 1-516-512-3133

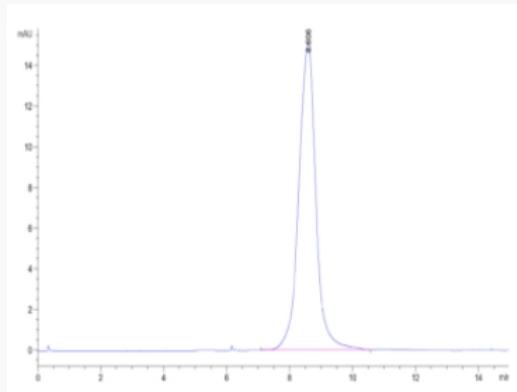
 Email: [info@creative-biomart.com](mailto:info@creative-biomart.com)  Fax: 1-631-938-8127

 45-1 Ramsey Road, Shirley, NY 11967, USA

**Tris-Bis PAGE**



**SEC-HPLC**



 Tel: 1-631-559-9269 1-516-512-3133

 Email: [info@creative-biomart.com](mailto:info@creative-biomart.com)  Fax: 1-631-938-8127

 45-1 Ramsey Road, Shirley, NY 11967, USA