

Recombinant Human ADAM8 protein, His-tagged

Cat. No. ADAM8-355H **Lot. No.** (See product label)

SPECIFICATION

Product Overview	Recombinant Human ADAM8 protein (Ile17-Pro497), fused to His tag at C-terminus, was expressed in human 293 cells (HEK293).
Species	Human
Source	HEK293
ProteinLength	481
Description	Disintegrin and metalloproteinase domain-containing protein 8 is also known as ADAM8, Cell surface antigen MS2 and CD antigen CD156a, which belongs to the ADAM (a disintegrin and metalloprotease domain) family. ADAM family play a fundamental role in diverse processes such as asthma, development, angiogenesis and cancer through their activities in cell adhesion/fusion, membrane protein shedding, and signal transduction. ADAM8/CD156a contains 1 disintegrin domain, 1 EGF-like domain and 1 peptidase M12B domain. ADAM8 /MS2/CD156a is expressed on neutrophils and monocytes. ADAM8/MS2 possible involvement in extravasation of leukocytes.
Form	Lyophilized from 0.22 um filtered solution in 50 mM Tris, 150 mM NaCl, 20 mM CaCl ₂ , pH7.5, 10% trehalose.
Molecular Mass	The protein has a calculated MW of 53.8 kDa, which migrates as a 180-220 kDa band in DTT-reduced SDS-PAGE due to glycosylation. Two main fragments bands are visible with apparent MW of 69-73 kDa and 46-48 kDa respectively in reduced SDS-

 Tel: 1-631-559-9269 1-516-512-3133

 Email: info@creative-biomart.com  Fax: 1-631-938-8127

 45-1 Ramsey Road, Shirley, NY 11967, USA

	PAGE as a result of its being prone to proteolytic cleavage.
Endotoxin	Less than 1.0 EU per ug by the LAL method.
Purity	>85% as determined by SDS-PAGE.
Storage	<p>For long term storage, the product should be stored at lyophilized state at -20 centigrade or lower.</p> <p>Please avoid repeated freeze-thaw cycles.</p> <p>This product is stable after storage at:</p> <p>-20 centigrade to -70 centigrade for 12 months in lyophilized state;</p> <p>-70 centigrade for 3 months under sterile conditions after reconstitution.</p>
Reconstitution	It is recommended that sterile water be added to the vial to prepare a stock solution of 0.2 ug/ul. Centrifuge the vial at 4°C before opening to recover the entire contents.

GENE INFORMATION

Gene Name	ADAM8
Official Symbol	ADAM8
Synonyms	ADAM8; ADAM metallopeptidase domain 8; a disintegrin and metalloproteinase domain 8; disintegrin and metalloproteinase domain-containing protein 8; CD156; MS2; cell surface antigen MS2; human leukocyte differentiation antigen; MGC134985
Gene ID	101
mRNA Refseq	NM_001109
Protein Refseq	NP_001100

 Tel: 1-631-559-9269 1-516-512-3133

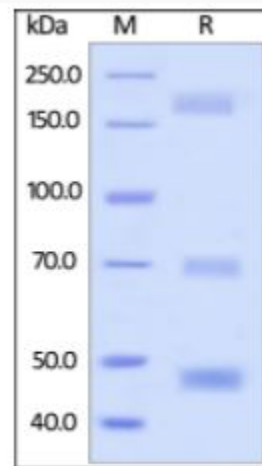
 Email: info@creative-biomart.com  Fax: 1-631-938-8127

 45-1 Ramsey Road, Shirley, NY 11967, USA

MIM 602267

UniProt ID P78325

**SDS-PAGE of
ADAM8-355H**



Human ADAM8, His Tag on SDS-PAGE under reducing (R) condition. The gel was stained overnight with Coomassie Blue. The purity of the protein is greater than 85%.

Tel: 1-631-559-9269 1-516-512-3133

Email: info@creative-biomart.com Fax: 1-631-938-8127

45-1 Ramsey Road, Shirley, NY 11967, USA