

Recombinant Human ADAM9 Protein, GST-tagged

Cat. No. ADAM9-293H **Lot. No.** (See product label)

SPECIFICATION

Product Overview	Human ADAM9 partial ORF (NP_003807, 36 a.a. - 135 a.a.) recombinant protein with GST-tag at N-terminal.
Species	Human
Source	Wheat Germ
Description	This gene encodes a member of the ADAM (a disintegrin and metalloprotease domain) family. Members of this family are membrane-anchored proteins structurally related to snake venom disintegrins, and have been implicated in a variety of biological processes involving cell-cell and cell-matrix interactions, including fertilization, muscle development, and neurogenesis. The protein encoded by this gene interacts with SH3 domain-containing proteins, binds mitotic arrest deficient 2 beta protein, and is also involved in TPA-induced ectodomain shedding of membrane-anchored heparin-binding EGF-like growth factor. Several alternatively spliced transcript variants have been identified for this gene. [provided by RefSeq, Jul 2010]
Molecular Mass	36.74 kDa
AA Sequence	QTSHLSSYEIITPWRLTRERREAPRPYSKQVSYVIQAEGKEHIIHLERNKDLLPEDFVV YTYNKEGTLITDHPNIQNHCHYRGYVEGVHNSSIALSDCFG
Applications	Enzyme-linked Immunoabsorbent Assay Western Blot (Recombinant protein) Antibody Production

 Tel: 1-631-559-9269 1-516-512-3133

 Email: info@creative-biomart.com  Fax: 1-631-938-8127

 45-1 Ramsey Road, Shirley, NY 11967, USA

Protein Array

Notes	Best use within three months from the date of receipt of this protein.
Storage	Store at -80 centigrade. Aliquot to avoid repeated freezing and thawing.
Storage Buffer	50 mM Tris-HCl, 10 mM reduced Glutathione, pH=8.0 in the elution buffer.

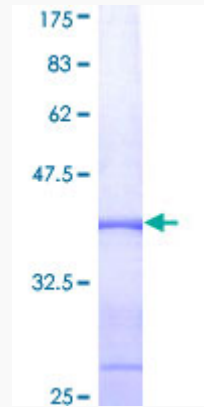
GENE INFORMATION

Gene Name	ADAM9 ADAM metalloproteinase domain 9 [Homo sapiens]
Official Symbol	ADAM9
Synonyms	ADAM9; ADAM metalloproteinase domain 9; a disintegrin and metalloproteinase domain 9 (meltrin gamma) , cone rod dystrophy 9 , CORD9; disintegrin and metalloproteinase domain-containing protein 9; KIAA0021; MCMP; MDC9; meltrin gamma; Mltng; cone rod dystrophy 9; myeloma cell metalloproteinase; cellular disintegrin-related protein; ADAM metalloproteinase domain 9 (meltrin gamma); metalloproteinase/disintegrin/cysteine-rich protein 9; CORD9;
Gene ID	8754
mRNA Refseq	NM_003816
Protein Refseq	NP_003807
MIM	602713
UniProt ID	Q13443

 Tel: 1-631-559-9269 1-516-512-3133

 Email: info@creative-biomart.com  Fax: 1-631-938-8127

 45-1 Ramsey Road, Shirley, NY 11967, USA



12.5% SDS-PAGE Stained with Coomassie Blue.

 Tel: 1-631-559-9269 1-516-512-3133

 Email: info@creative-biomart.com  Fax: 1-631-938-8127

 45-1 Ramsey Road, Shirley, NY 11967, USA