

# Recombinant Full Length Human ADAMTS8 Protein, C-Flag-tagged

**Cat. No.** ADAMTS8-605HFL    **Lot. No.** (See product label)

## SPECIFICATION

<b>Product Overview</b>	Recombinant Full Length Human ADAMTS8 Protein, fused to Flag-tag at C-terminus, was expressed in Mammalian cells.
<b>Species</b>	Human
<b>Source</b>	Mammalian Cells
<b>Description</b>	This gene encodes a member of the ADAMTS (a disintegrin and metalloproteinase with thrombospondin motifs) protein family. Members of the family share several distinct protein modules, including a propeptide region, a metalloproteinase domain, a disintegrin-like domain, and a thrombospondin type 1 (TS) motif. Individual members of this family differ in the number of C-terminal TS motifs, and some have unique C-terminal domains. The encoded preproprotein is proteolytically processed to generate the mature enzyme. This enzyme contains two C-terminal TS motifs, and disrupts angiogenesis in vivo. A number of disorders have been mapped in the vicinity of this gene, most notably lung neoplasms. Reduced expression of this gene has been observed in multiple human cancers and this gene has been proposed as a potential tumor suppressor.
<b>Form</b>	25 mM Tris HCl, pH 7.3, 100 mM glycine, 10% glycerol.
<b>Molecular Mass</b>	96.3 kDa
<b>AA Sequence</b>	MLPAPAAPRWPPLLLLLLLLLPLARGAPARPAAGGQASELVVPTRLPGSAGELALHLS

 Tel: 1-631-559-9269    1-516-512-3133

 Email: [info@creative-biomart.com](mailto:info@creative-biomart.com)     Fax: 1-631-938-8127

 45-1 Ramsey Road, Shirley, NY 11967, USA

AFGKGFVLR LAPD DSFLAPDFKIERLGGSGRATGGGERGLRGCFSSGTVNGEPESLA  
 AVSLCRGLSGSFLLDGEEFTIQPQGAG GSLAQPHRLQRWGPAGARPLPRGPEWE  
 VETGEGQRQERGDHQEDSEEEESQEEEEAE GASEPPPPLGATSRT KRFVSEARFVET  
 LLVADASMAAFYGADLQNHILTLMSVAARIYKHPHSIKNSINLMVVKVLIVEDEKKGPE  
 VSDNGGLTLRNFCNWQRRFNQPSDRHPEHYDTAILLTRQNFCGQEGLCDTLGVADI  
 GTICDPNKSCSVIE DEGLQAAHTLAHELGHVLSMPHDDSKPCTRLF GPMGKHHVM  
 APLFVHLNQTLPWSPCSAMYLTELLDGGH GDCLLDAPAAALPLPTGLPGRMALYQL  
 DQQCRQIFGPDFRHCNNTSAQDVCAQLWCHTDGAEPLCHTKNG SLPWADGTPCG  
 PGHLCSEGSCLPEEEEVERPKPVVDGGWAPWGPWGEC SRTC GGGVQFSHRECKD  
 PEPQNG GRYCLGRRAKYQSCHTEECPPDGKSFREQQCEKYNAYNYTDM DGNLLQ  
 WVPKYAGVSPRDRCKLFCRARG RSEFKVFEAKVIDGTLCGPETLAICVRGQC VKAG  
 CDHVVDSPRKLDKCGVCGGKGN SCRKVSGSLTPTNY GYNDIVTIPAGATNIDVKQR  
 SHPGVQNDGNYLALKTADGQYLLNGNLAIS AIEQDILVKGTILKYSGSIA TLERLQSF  
 RPLPEPLTVQLLTVPGEVFPKVKY TFFVPNDVDFSMQSSKERATTNIIQPLLHAQW  
 VLGDW  
 SECSSTCGAGWQRRTVECRDPSGQASATCNKALKPEDAKPCESQLCPLTRTRPLE  
 QKLISEEDLAANDILDYKDDDDKV

<b>Purity</b>	> 80% as determined by SDS-PAGE and Coomassie blue staining.
<b>Stability</b>	Stable for 12 months from the date of receipt of the product under proper storage and handling conditions. Avoid repeated freeze-thaw cycles.
<b>Storage</b>	Store at -80 centigrade.
<b>Concentration</b>	>50 ug/mL as determined by microplate BCA method.
<b>Preparation</b>	Recombinant protein was captured through anti-DDK affinity column followed by conventional chromatography steps.

 Tel: 1-631-559-9269 1-516-512-3133

 Email: [info@creative-biomart.com](mailto:info@creative-biomart.com)  Fax: 1-631-938-8127

 45-1 Ramsey Road, Shirley, NY 11967, USA

**Protein Families** Druggable Genome, Protease, Secreted Protein

**Full Length** Full L.

## GENE INFORMATION

**Gene Name** ADAMTS8 ADAM metalloproteinase with thrombospondin type 1 motif 8 [ Homo sapiens (human) ]

**Official Symbol** ADAMTS8

**Synonyms** METH2; ADAM-TS8

**Gene ID** 11095

**mRNA Refseq** NM\_007037.6


**Protein Refseq** NP\_008968.4

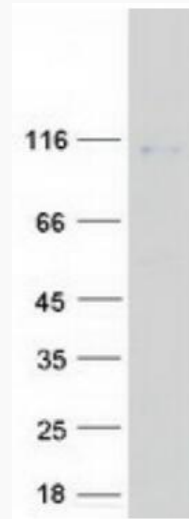
**MIM** 605175

**UniProt ID** Q9UP79


 Tel: 1-631-559-9269 1-516-512-3133

 Email: [info@creative-biomart.com](mailto:info@creative-biomart.com)  Fax: 1-631-938-8127


 45-1 Ramsey Road, Shirley, NY 11967, USA



Coomassie blue staining of purified ADAMTS8 protein.

 Tel: 1-631-559-9269 1-516-512-3133

 Email: [info@creative-biomart.com](mailto:info@creative-biomart.com)  Fax: 1-631-938-8127

 45-1 Ramsey Road, Shirley, NY 11967, USA