

## Recombinant Human ADAMTSL1 Protein, GST-tagged

Cat. No. ADAMTSL1-310H Lot. No. (See product label)

### SPECIFICATION

<b>Product Overview</b>	Human ADAMTSL1 full-length ORF ( AAH30262.1, 1 a.a. - 439 a.a.) recombinant protein with GST-tag at N-terminal.
<b>Species</b>	Human
<b>Source</b>	Wheat Germ
<b>Description</b>	This gene encodes a secreted protein and member of the ADAMTS (a disintegrin and metalloproteinase with thrombospondin motif) family. This protein lacks the metalloproteinase and disintegrin-like domains, which are typical of the ADAMTS family, but contains other ADAMTS domains, including the thrombospondin type 1 motif. This protein may have important functions in the extracellular matrix. Alternative splicing results in multiple transcript variants encoding distinct proteins. [provided by RefSeq, Jul 2008]
<b>Molecular Mass</b>	75.2 kDa
<b>AA Sequence</b>	MECCRATPGTLLLFLAFLLLSSRTARSEEDRDGLWDAWGPWSECSRTC GGGASY SLRRCLSSKSCTEGRNIRYRTCSNVDCPPEAGDFRAQQCSAHNDVKHHGQFYEWLP VSNDPDNPCSLKCQAKGTTLVVELAPKVLGTRCYTESLDMCISGLCQIVGCDHQL GSTVKEDNCGVCNGDGSTCRLVRGQYKSQLSATKSDDTVVAIPYGSRHIRLVLKG DHLYLETKTLQGTKGENSLSSSTGTFVLVDNSSVDFQKFPDKEILRMAGPLTADFIVKIR NSGSADSTVQFIFYQPIIHRWRETDFFPCSATCGGGYQLTSAECYDLRSNRVVADQ YCHYYPENIKPKPKLQECNLDPCPARWEATPWTACSSSCGGGIQSRVSCVEEDIQ

 Tel: 1-631-559-9269 1-516-512-3133

 Email: [info@creative-biomart.com](mailto:info@creative-biomart.com)  Fax: 1-631-938-8127

 45-1 Ramsey Road, Shirley, NY 11967, USA

GHVTSVEEWKCMYTPKMPIAQPCNIFDCPKWLAQEWSPVTVPSFFVH

**Applications**

Enzyme-linked Immunoabsorbent Assay  
 Western Blot (Recombinant protein)  
 Antibody Production  
 Protein Array

**Notes**

Best use within three months from the date of receipt of this protein.

**Storage**

Store at -80 centigrade. Aliquot to avoid repeated freezing and thawing.

**Storage Buffer**

50 mM Tris-HCl, 10 mM reduced Glutathione, pH=8.0 in the elution buffer.

## GENE INFORMATION

**Gene Name**

[ADAMTSL1 ADAMTS-like 1 \[ Homo sapiens \]](#)

**Official Symbol**

[ADAMTSL1](#)

**Synonyms**

ADAMTSL1; ADAMTS-like 1; C9orf94, chromosome 9 open reading frame 94; ADAMTS-like protein 1; ADAMTSR1; FLJ35283; punctin; punctin-1; ADAM-TS related protein 1; C9orf94; PUNCTIN; ADAMTSL-1; FLJ41032; FLJ46891; MGC40193; MGC118803; MGC118805; DKFZp686L03130;

**Gene ID**

[92949](#)

**mRNA Refseq**

[NM\\_001040272](#)

**Protein Refseq**

[NP\\_001035362](#)

**MIM**

[609198](#)

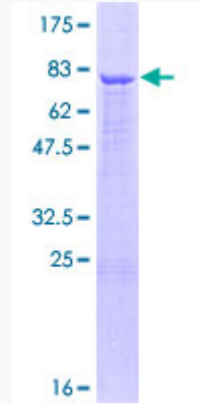
 Tel: 1-631-559-9269 1-516-512-3133

 Email: [info@creative-biomart.com](mailto:info@creative-biomart.com)  Fax: 1-631-938-8127

 45-1 Ramsey Road, Shirley, NY 11967, USA

UniProt ID

Q8N6G6



12.5% SDS-PAGE Stained with Coomassie Blue.

 Tel: 1-631-559-9269 1-516-512-3133

 Email: [info@creative-biomart.com](mailto:info@creative-biomart.com)  Fax: 1-631-938-8127

 45-1 Ramsey Road, Shirley, NY 11967, USA