

Recombinant Human ADAMTSL1 Protein (Met1-Lys439), C-His tagged

Cat. No. ADAMTSL1-5312H Lot. No. (See product label)

SPECIFICATION

Product Overview	Recombinant human ADAMTSL1 (Met1-Lys439) fused with the C-terminal His tag was expressed in Mammalian cells.
Species	Human
Source	Mammalian Cells
ProteinLength	Met1-Lys439
Form	Lyophilized powder/frozen liquid
Molecular Mass	48.29 kDa
Endotoxin	< 1.0 EU/μg of the protein as determined by the LAL method.
Purity	>90% as determined by SDS-PAGE.
Notes	For research use only.
Storage	Use a manual defrost freezer and avoid repeated freeze thaw cycles. Store at 2 to 8 centigrade for one week. Store at -20 to -80 centigrade for twelve months from the date of receipt.
Storage Buffer	Supplied as solution form in PBS, pH 7.5 or lyophilized from PBS, pH 7.5.

 Tel: 1-631-559-9269 1-516-512-3133

 Email: info@creative-biomart.com  Fax: 1-631-938-8127

 45-1 Ramsey Road, Shirley, NY 11967, USA

Reconstitution Reconstitute in sterile water for a stock solution.

Shipping They are shipped out with dry ice/blue ice unless customers require otherwise.

GENE INFORMATION

Gene Name [ADAMTSL1 ADAMTS-like 1 \[Homo sapiens \(human\) \]](#)

Official Symbol [ADAMTSL1](#)

Synonyms ADAMTSL1; ADAMTS-like 1; C9orf94, chromosome 9 open reading frame 94; ADAMTS-like protein 1; ADAMTSR1; FLJ35283; punctin; punctin-1; ADAM-TS related protein 1; C9orf94; PUNCTIN; ADAMTSL-1; FLJ41032; FLJ46891; MGC40193; MGC118803; MGC118805; DKFZp686L03130;

Gene ID [92949](#)

mRNA Refseq [NM_001040272](#)

Protein Refseq [NP_001035362](#)

MIM [609198](#)

UniProt ID [Q8N6G6](#)

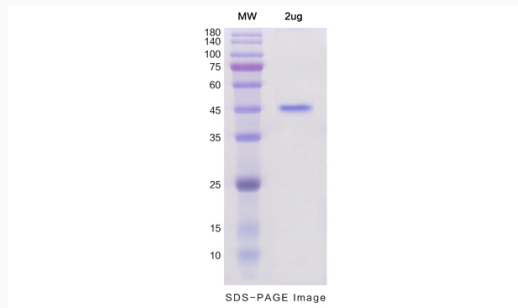
 Tel: 1-631-559-9269 1-516-512-3133

 Email: info@creative-biomart.com  Fax: 1-631-938-8127

 45-1 Ramsey Road, Shirley, NY 11967, USA



SDS-PAGE



Tel: 1-631-559-9269 1-516-512-3133

Email: info@creative-biomart.com Fax: 1-631-938-8127

45-1 Ramsey Road, Shirley, NY 11967, USA