

Recombinant Human ADARB1 Protein, GST-tagged

Cat. No. ADARB1-315H Lot. No. (See product label)

SPECIFICATION

Product Overview	Human ADARB1 partial ORF (AAH65545, 592 a.a. - 701 a.a.) recombinant protein with GST-tag at N-terminal.
Species	Human
Source	Wheat Germ
Description	This gene encodes the enzyme responsible for pre-mRNA editing of the glutamate receptor subunit B by site-specific deamination of adenosines. Studies in rat found that this enzyme acted on its own pre-mRNA molecules to convert an AA dinucleotide to an AI dinucleotide which resulted in a new splice site. Alternative splicing of this gene results in several transcript variants, some of which have been characterized by the presence or absence of an ALU cassette insert and a short or long C-terminal region. [provided by RefSeq, Jul 2008]
Molecular Mass	37.84 kDa
AA Sequence	PGKAPNFSVNWTVGDSAIEVINATTGKDELGRASRLCKHALYCRWMRVHGKVP SHL LRSKITKPNVYHESKLA AKEYQAAKARLFTAFIKAGLGAWVEKPTEQDQFSLTP
Applications	Enzyme-linked Immunoabsorbent Assay Western Blot (Recombinant protein) Antibody Production Protein Array

 Tel: 1-631-559-9269 1-516-512-3133

 Email: info@creative-biomart.com  Fax: 1-631-938-8127

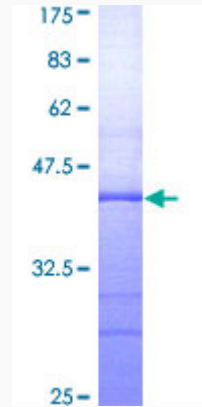
 45-1 Ramsey Road, Shirley, NY 11967, USA

Notes	Best use within three months from the date of receipt of this protein.
Storage	Store at -80 centigrade. Aliquot to avoid repeated freezing and thawing.
Storage Buffer	50 mM Tris-HCl, 10 mM reduced Glutathione, pH=8.0 in the elution buffer.
GENE INFORMATION	
Gene Name	ADARB1 adenosine deaminase, RNA-specific, B1 [Homo sapiens]
Official Symbol	ADARB1
Synonyms	ADARB1; adenosine deaminase, RNA-specific, B1; adenosine deaminase, RNA specific, B1 (homolog of rat RED1); double-stranded RNA-specific editase 1; ADAR2; ADAR2a; ADAR2a L1; ADAR2a L2; ADAR2a L3; ADAR2b; ADAR2c; ADAR2d; ADAR2g; DRABA2; DRADA2; hRED1; RED1; RED1 homolog (rat); RNA editase; RED1 homolog; RNA-editing enzyme 1; RNA editing deaminase 1; RNA-editing deaminase 1; dsRNA adenosine deaminase; human dsRNA adenosine deaminase DRADA2; adenosine deaminase, RNA-specific, B1 (RED1 homolog rat); adenosine deaminase, RNA-specific, B1 (homolog of rat RED1);
Gene ID	104
mRNA Refseq	NM_001112
Protein Refseq	NP_001103
MIM	601218
UniProt ID	P78563

 Tel: 1-631-559-9269 1-516-512-3133

 Email: info@creative-biomart.com  Fax: 1-631-938-8127

 45-1 Ramsey Road, Shirley, NY 11967, USA



12.5% SDS-PAGE Stained with Coomassie Blue.

Tel: 1-631-559-9269 1-516-512-3133

Email: info@creative-biomart.com Fax: 1-631-938-8127

45-1 Ramsey Road, Shirley, NY 11967, USA