

## Recombinant Human ADARB2 protein, His-tagged

Cat. No. ADARB2-9743H Lot. No. (See product label)

### SPECIFICATION

<b>Product Overview</b>	Recombinant Human ADARB2 protein(222-524 aa), fused with N-terminal His tag, was expressed in E. coli.
<b>Species</b>	Human
<b>Source</b>	E.coli
<b>ProteinLength</b>	222-524 aa
<b>Tag</b>	N-His
<b>Form</b>	The purified protein was Lyophilized from sterile PBS (58mM Na <sub>2</sub> HPO <sub>4</sub> , 17mM NaH <sub>2</sub> PO <sub>4</sub> , 68mM NaCl, pH7.4). 5 % trehalose and 5 % mannitol are added as protectant before lyophilization.
<b>Purity</b>	85%, by SDS-PAGE with Coomassie Brilliant Blue staining.
<b>Storage</b>	Short-term storage: Store at 2-8°C for (1-2 weeks). Long-term storage: Aliquot and store at -20°C to -80°C for up to 3 months, reconstitution with sterile water and addition of an equal volume of glycerol. Avoid repeat freeze-thaw cycles.
<b>Reconstitution</b>	Reconstitute at 0.25 µg/µl in 200 µl sterile water for short-term storage. After reconstitution with sterile water, if glycerol has no effect on subsequent experiments, it is recommended to add an equal volume of glycerol for long-term storage.

 Tel: 1-631-559-9269 1-516-512-3133

 Email: [info@creative-biomart.com](mailto:info@creative-biomart.com)  Fax: 1-631-938-8127

 45-1 Ramsey Road, Shirley, NY 11967, USA

**AA Sequence**

TLFQEFEPAPRPGLAGGRPGDAALLSAAYGRRRLLCRALDLVGPTPATPAAPGER  
 NPVVLLNRLRAGLRVCLAEPAERRARSFVMAVSVDGRTFEGSGRSKKLARGQAA  
 QAALQELFDIQMPGHAPGRAR RTPMPQEFADSIQLVTQKFREVTTDLTPMHARHK  
 ALAGIVMTKGLDARQAQVVALSSGTKCISGEHLSDQGLVVNDCHAEVVARRAFLHFL  
 YTQLELHLSKRREDSERSIFVRLKEGGYRLRENILFHLVSTSPCGDARLHSPYEITT  
 DLHSSKHLVRKFRGHLRTKIE

## GENE INFORMATION

**Gene Name**

[ADARB2 adenosine deaminase, RNA-specific, B2 \[ Homo sapiens \]](#)

**Official Symbol**

[ADARB2](#)

**Synonyms**

ADARB2; adenosine deaminase, RNA-specific, B2; adenosine deaminase, RNA specific, B2 (RED2 homolog rat); double-stranded RNA-specific editase B2; ADAR3; hRED2; RED2; RED2 homolog (rat); RED2 homolog; homolog of rat BLUE; RNA-editing enzyme 2; RNA-editing deaminase 2; dsRNA adenosine deaminase B2; RNA-dependent adenosine deaminase 3; adenosine deaminase, RNA-specific, B2 (RED1 homolog rat); adenosine deaminase, RNA-specific, B2 (RED2 homolog rat); FLJ25034; FLJ36975; FLJ41340;

**Gene ID**

[105](#)

**mRNA Refseq**

[NM\\_018702](#)

**Protein Refseq**

[NP\\_061172](#)

**MIM**

[602065](#)

**UniProt ID**

[Q9NS39](#)

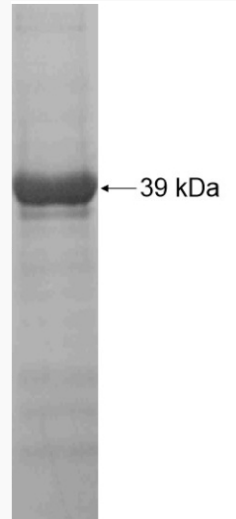
 Tel: 1-631-559-9269 1-516-512-3133

 Email: [info@creative-biomart.com](mailto:info@creative-biomart.com)  Fax: 1-631-938-8127

 45-1 Ramsey Road, Shirley, NY 11967, USA



SDS-PAGE



Tel: 1-631-559-9269 1-516-512-3133

Email: [info@creative-biomart.com](mailto:info@creative-biomart.com) Fax: 1-631-938-8127

45-1 Ramsey Road, Shirley, NY 11967, USA