

Recombinant Human ADCK1 Protein, GST-tagged

Cat. No. ADCK1-320H Lot. No. (See product label)

SPECIFICATION

Product Overview Human ADCK1 full-length ORF (NP_065154.2, 1 a.a. - 523 a.a.) recombinant protein with GST-tag at N-terminal.

Species Human

Source Wheat Germ

Description ADCK1 (AarF Domain Containing Kinase 1) is a Protein Coding gene. GO annotations related to this gene include transferase activity, transferring phosphorus-containing groups and protein serine/threonine kinase activity. An important paralog of this gene is ADCK5.

Molecular Mass 86.1 kDa

AA Sequence

```

MARKALKLASWTSMALAASGIYFYSNKYLDPNDFGAVRVGRAVATTAVISYDYLTSL
KSVPYGSEEYLQLRSKVHLRSARRLCELCCANRGTFIKVGQHLGALDYLLPEEYTTST
LKVLHSQAPQSSMQEIRQVIREDLGKEIHDLFQSFDDTPLGTASLAQVHKAVLHDGR
TVAVKVQHPKVRAQSSKDILLMEVLVLAVKQLFPEFEFMWLVDKAKNLPLEDFLN
EGRNAEKVSQMLRHFDFLKVPRIHWDLSTERVLLMEFVDGGQVNDRDYMERKID
VNEISRHLGKMYSEMIFVNGFVHCDPHPGNVLVRKHPGTGKAEIVLLDHGLYQMLTE
EFRLNYCHLWQSLIWTDMKRVKEYSQR LGAGDLYPLFACMLTARSWDSVNRGISQ
APVTATEDLEIRNNAANYLPQISHLLNHVPRQMLLILKTNDLLRGIEAALGTRASASSF
LNMSRCCIRALAEHKKKNTCSFFRRTQISFSEAFNLWQINLHELILRVKGLKLADRVL
ALICWLFAPL
    
```

 Tel: 1-631-559-9269 1-516-512-3133

 Email: info@creative-biomart.com  Fax: 1-631-938-8127

 45-1 Ramsey Road, Shirley, NY 11967, USA

Applications	Enzyme-linked Immunoabsorbent Assay Western Blot (Recombinant protein) Antibody Production Protein Array
Notes	Best use within three months from the date of receipt of this protein.
Storage	Store at -80 centigrade. Aliquot to avoid repeated freezing and thawing.
Storage Buffer	50 mM Tris-HCl, 10 mM reduced Glutathione, pH=8.0 in the elution buffer.

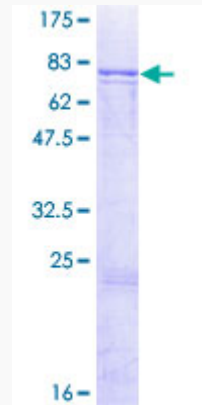
GENE INFORMATION

Gene Name	ADCK1 aarF domain containing kinase 1 [Homo sapiens]
Official Symbol	ADCK1
Synonyms	ADCK1; aarF domain containing kinase 1; uncharacterized aarF domain-containing protein kinase 1; FLJ39600;
Gene ID	57143
mRNA Refseq	NM_001142545
Protein Refseq	NP_001136017
UniProt ID	Q86TW2

 Tel: 1-631-559-9269 1-516-512-3133

 Email: info@creative-biomart.com  Fax: 1-631-938-8127

 45-1 Ramsey Road, Shirley, NY 11967, USA



12.5% SDS-PAGE Stained with Coomassie Blue.

 Tel: 1-631-559-9269 1-516-512-3133

 Email: info@creative-biomart.com  Fax: 1-631-938-8127

 45-1 Ramsey Road, Shirley, NY 11967, USA