

Recombinant Human ADCY1 protein, GST-tagged

Cat. No. ADCY1-18434H Lot. No. (See product label)

SPECIFICATION

Product Overview Recombinant Human ADCY1 protein(1050-1119 aa), fused with N-terminal GST tag, was expressed in E. coli.

Species Mouse

Source E.coli

ProteinLength 1050-1119 aa

Tag N-GST

Form The purified protein was Lyophilized from sterile PBS (58mM Na₂HPO₄, 17mM NaH₂PO₄, 68mM NaCl, pH7.4). 5 % trehalose and 5 % mannitol are added as protectant before lyophilization.


Purity 80%, by SDS-PAGE with Coomassie Brilliant Blue staining.

Storage Short-term storage: Store at 2-8°C for (1-2 weeks). Long-term storage: Aliquot and store at -20°C to -80°C for up to 3 months, reconstitution with sterile water and addition of an equal volume of glycerol. Avoid repeat freeze-thaw cycles.

Reconstitution Reconstitute at 0.25 µg/µl in 200 µl sterile water for short-term storage. After reconstitution with sterile water, if glycerol has no effect on subsequent experiments, it is recommended to add an equal volume of glycerol for long-term storage.

 Tel: 1-631-559-9269 1-516-512-3133

 Email: info@creative-biomart.com  Fax: 1-631-938-8127

 45-1 Ramsey Road, Shirley, NY 11967, USA

AA Sequence LTYFLEGRTDGNGSQIRSLGLDRKMCPFGRAGLQGRRPPVCPMPGVSVRAGLPPH
SPGQYLPSAAAGKEA

GENE INFORMATION

Gene Name [ADCY1 adenylate cyclase 1 \(brain\) \[Homo sapiens \]](#)

Official Symbol [ADCY1](#)

Synonyms ADCY1; adenylate cyclase 1 (brain); adenylate cyclase type 1; AC1; adenylyl cyclase; adenylyl cyclase 1; adenylate cyclase type I; ATP pyrophosphate-lyase 1; 3,5-cyclic AMP synthetase; Ca(2+)/calmodulin-activated adenylyl cyclase;

Gene ID [107](#)

mRNA Refseq [NM_021116](#)

Protein Refseq [NP_066939](#)

MIM [103072](#)

UniProt ID [Q08828](#)

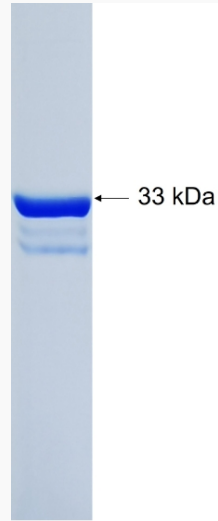
 Tel: 1-631-559-9269 1-516-512-3133

 Email: info@creative-biomart.com  Fax: 1-631-938-8127

 45-1 Ramsey Road, Shirley, NY 11967, USA



SDS-PAGE



Tel: 1-631-559-9269 1-516-512-3133

Email: info@creative-biomart.com Fax: 1-631-938-8127

45-1 Ramsey Road, Shirley, NY 11967, USA