

## Recombinant Human ADCY2 Protein, GST-tagged

Cat. No. ADCY2-327H Lot. No. (See product label)

### SPECIFICATION

<b>Product Overview</b>	Human ADCY2 partial ORF ( NP_065433, 977 a.a. - 1086 a.a.) recombinant protein with GST-tag at N-terminal.
<b>Species</b>	Human
<b>Source</b>	Wheat Germ
<b>Description</b>	This gene encodes a member of the family of adenylate cyclases, which are membrane-associated enzymes that catalyze the formation of the secondary messenger cyclic adenosine monophosphate (cAMP). This enzyme is insensitive to Ca(2+)/calmodulin, and is stimulated by the G protein beta and gamma subunit complex. [provided by RefSeq, Jul 2008]
<b>Molecular Mass</b>	37.84 kDa
<b>AA Sequence</b>	GKLDAINKHSFNDFKLRVGINHGPVIAGVIGAQKPQYDIWGNTVNVASRMDSTGVLD KIQVTEETSLVLQTLGYTCTCRGIINVKGKGLKTYFVNTEMSRSLSQSNVAS
<b>Applications</b>	Enzyme-linked Immunoabsorbent Assay Western Blot (Recombinant protein) Antibody Production Protein Array
<b>Notes</b>	Best use within three months from the date of receipt of this protein.

 Tel: 1-631-559-9269 1-516-512-3133

 Email: [info@creative-biomart.com](mailto:info@creative-biomart.com)  Fax: 1-631-938-8127

 45-1 Ramsey Road, Shirley, NY 11967, USA

**Storage** Store at -80 centigrade. Aliquot to avoid repeated freezing and thawing.

**Storage Buffer** 50 mM Tris-HCl, 10 mM reduced Glutathione, pH=8.0 in the elution buffer.

## GENE INFORMATION

**Gene Name** ADCY2 adenylate cyclase 2 [ Homo sapiens (human) ]

**Official Symbol** ADCY2

**Synonyms**

ADCY2; adenylate cyclase 2; AC2; HBAC2; adenylate cyclase type 2; 3',5'-cyclic AMP synthetase; ATP pyrophosphate-lyase 2; adenylate cyclase 2 (brain); adenylate cyclase II; adenylate cyclase type II; adenylyl cyclase 2; type II adenylate cyclase; EC 4.6.1.1

**Gene ID** 108

**mRNA Refseq** NM\_020546

**Protein Refseq** NP\_065433

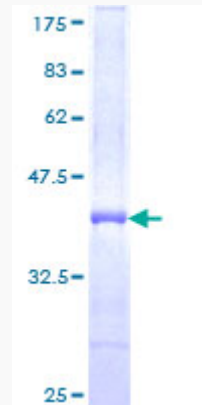
**MIM** 103071

**UniProt ID** Q08462

 Tel: 1-631-559-9269 1-516-512-3133

 Email: [info@creative-biomart.com](mailto:info@creative-biomart.com)  Fax: 1-631-938-8127

 45-1 Ramsey Road, Shirley, NY 11967, USA



12.5% SDS-PAGE Stained with Coomassie Blue.

Tel: 1-631-559-9269 1-516-512-3133

Email: [info@creative-biomart.com](mailto:info@creative-biomart.com) Fax: 1-631-938-8127

45-1 Ramsey Road, Shirley, NY 11967, USA