

Recombinant Human ADCY5 Protein, GST-tagged

Cat. No. ADCY5-329H **Lot. No.** (See product label)

SPECIFICATION

Product Overview	Human ADCY5 partial ORF (NP_899200, 1152 a.a. - 1261 a.a.) recombinant protein with GST-tag at N-terminal.
Species	Human
Source	Wheat Germ
Description	This gene encodes a member of the membrane-bound adenylyl cyclase enzymes. Adenylyl cyclases mediate G protein-coupled receptor signaling through the synthesis of the second messenger cAMP. Activity of the encoded protein is stimulated by the Gs alpha subunit of G protein-coupled receptors and is inhibited by protein kinase A, calcium and Gi alpha subunits. Single nucleotide polymorphisms in this gene may be associated with low birth weight and type 2 diabetes. Alternatively spliced transcript variants that encode different isoforms have been observed for this gene. [provided by RefSeq, Dec 2010]
Molecular Mass	37.84 kDa
AA Sequence	ADFAMKLMQMKYINEHSFNNFQMKIGLNIGPVVAGVIGARKPQYDIWGNTVNVAS RMDSTGVPDRIQVTTDMYQVLAANTYQLECRGVVKVKGKGEMMTYFLNGGPPLS
Applications	Enzyme-linked Immunoabsorbent Assay Western Blot (Recombinant protein) Antibody Production Protein Array

 Tel: 1-631-559-9269 1-516-512-3133

 Email: info@creative-biomart.com  Fax: 1-631-938-8127

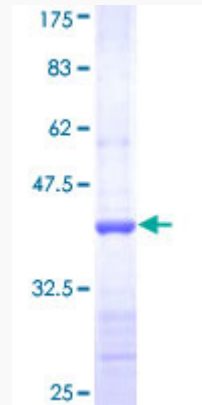
 45-1 Ramsey Road, Shirley, NY 11967, USA

Notes	Best use within three months from the date of receipt of this protein.
Storage	Store at -80 centigrade. Aliquot to avoid repeated freezing and thawing.
Storage Buffer	50 mM Tris-HCl, 10 mM reduced Glutathione, pH=8.0 in the elution buffer.
GENE INFORMATION	
Gene Name	ADCY5 adenylate cyclase 5 [Homo sapiens]
Official Symbol	ADCY5
Synonyms	ADCY5; adenylate cyclase 5; adenylate cyclase type 5; AC5; adenylyl cyclase 5; adenylate cyclase type V; ATP pyrophosphate-lyase 5;
Gene ID	111
mRNA Refseq	NM_001199642
Protein Refseq	NP_001186571
MIM	600293
UniProt ID	O95622

 Tel: 1-631-559-9269 1-516-512-3133

 Email: info@creative-biomart.com  Fax: 1-631-938-8127

 45-1 Ramsey Road, Shirley, NY 11967, USA



12.5% SDS-PAGE Stained with Coomassie Blue.

 Tel: 1-631-559-9269 1-516-512-3133

 Email: info@creative-biomart.com  Fax: 1-631-938-8127

 45-1 Ramsey Road, Shirley, NY 11967, USA