

Recombinant Human ADCY6 Protein, GST-tagged

Cat. No. ADCY6-330H **Lot. No.** (See product label)

SPECIFICATION

Product Overview	Human ADCY6 partial ORF (AAH64923, 701 a.a. - 800 a.a.) recombinant protein with GST-tag at N-terminal.
Species	Human
Source	Wheat Germ
Description	This gene encodes a member of the adenylyl cyclase family of proteins, which are required for the synthesis of cyclic AMP. All members of this family have an intracellular N-terminus, a tandem repeat of six transmembrane domains separated by a cytoplasmic loop, and a C-terminal cytoplasmic domain. The two cytoplasmic regions bind ATP and form the catalytic core of the protein. Adenylyl cyclases are important effectors of transmembrane signaling pathways and are regulated by the activity of G protein coupled receptor signaling. This protein belongs to a small subclass of adenylyl cyclase proteins that are functionally related and are inhibited by protein kinase A, calcium ions and nitric oxide. A mutation in this gene is associated with arthrogyriposis multiplex congenita. [provided by RefSeq, May 2015]
Molecular Mass	36.63 kDa
AA Sequence	YASIFLLLLITVLCIAVYSCGSLFPKALQRLSRSIVRSRAHSTAVGIFSVLLVFTSAIANM FTCNHTPIRSCAARMLNLT PADITACHLQQLNYS LGLDA
Applications	Enzyme-linked Immunoabsorbent Assay Western Blot (Recombinant protein)

 Tel: 1-631-559-9269 1-516-512-3133

 Email: info@creative-biomart.com  Fax: 1-631-938-8127

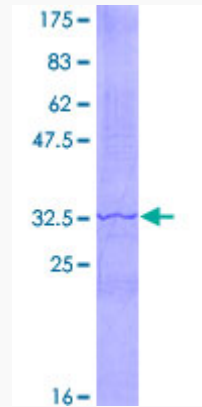
 45-1 Ramsey Road, Shirley, NY 11967, USA

	Antibody Production Protein Array
Notes	Best use within three months from the date of receipt of this protein.
Storage	Store at -80 centigrade. Aliquot to avoid repeated freezing and thawing.
Storage Buffer	50 mM Tris-HCl, 10 mM reduced Glutathione, pH=8.0 in the elution buffer.
GENE INFORMATION	
Gene Name	ADCY6 adenylate cyclase 6 [Homo sapiens]
Official Symbol	ADCY6
Synonyms	ADCY6; adenylate cyclase 6; adenylate cyclase type 6; AC6; adenylyl cyclase 6; ATP pyrophosphate-lyase 6; adenylate cyclase type VI; ca(2+)-inhibitable adenylyl cyclase; KIAA0422; DKFZp779F075;
Gene ID	112
mRNA Refseq	NM_015270
Protein Refseq	NP_056085
MIM	600294
UniProt ID	O43306

 Tel: 1-631-559-9269 1-516-512-3133

 Email: info@creative-biomart.com  Fax: 1-631-938-8127

 45-1 Ramsey Road, Shirley, NY 11967, USA



12.5% SDS-PAGE Stained with Coomassie Blue.

 Tel: 1-631-559-9269 1-516-512-3133

 Email: info@creative-biomart.com  Fax: 1-631-938-8127

 45-1 Ramsey Road, Shirley, NY 11967, USA