

Recombinant Human ADCY7 Protein, GST-tagged

Cat. No. ADCY7-331H Lot. No. (See product label)

SPECIFICATION

Product Overview	Human ADCY7 partial ORF (NP_001105, 197 a.a. - 277 a.a.) recombinant protein with GST-tag at N-terminal.
Species	Human
Source	Wheat Germ
Description	This gene encodes a membrane-bound adenylate cyclase that catalyses the formation of cyclic AMP from ATP and is inhibitable by calcium. The product of this gene is a member of the adenylyl cyclase class-4/guanylyl cyclase enzyme family that is characterized by the presence of twelve membrane-spanning domains in its sequences. Several transcript variants have been observed for this gene, but the full-length natures of only two have been determined so far. [provided by RefSeq, Oct 2013]
Molecular Mass	34.65 kDa
AA Sequence	HKHMQDASRDLFYTVKCIQIRRKLRIEKRQQENLLLSVLPAHISMGMKLAIIERLKE HGDRRCMPDNNFHSLYVKRHQN
Applications	Enzyme-linked Immunoabsorbent Assay Western Blot (Recombinant protein) Antibody Production Protein Array

 Tel: 1-631-559-9269 1-516-512-3133

 Email: info@creative-biomart.com  Fax: 1-631-938-8127

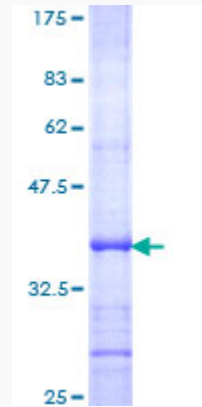
 45-1 Ramsey Road, Shirley, NY 11967, USA

Notes	Best use within three months from the date of receipt of this protein.
Storage	Store at -80 centigrade. Aliquot to avoid repeated freezing and thawing.
Storage Buffer	50 mM Tris-HCl, 10 mM reduced Glutathione, pH=8.0 in the elution buffer.
GENE INFORMATION	
Gene Name	ADCY7 adenylate cyclase 7 [Homo sapiens]
Official Symbol	ADCY7
Synonyms	ADCY7; adenylate cyclase 7; adenylate cyclase type 7; AC7; KIAA0037; adenylyl cyclase 7; ATP pyrophosphate-lyase 7; adenylate cyclase type VII; FLJ36387;
Gene ID	113
mRNA Refseq	NM_001114
Protein Refseq	NP_001105
MIM	600385
UniProt ID	P51828

 Tel: 1-631-559-9269 1-516-512-3133

 Email: info@creative-biomart.com  Fax: 1-631-938-8127

 45-1 Ramsey Road, Shirley, NY 11967, USA



12.5% SDS-PAGE Stained with Coomassie Blue.

Tel: 1-631-559-9269 1-516-512-3133

Email: info@creative-biomart.com Fax: 1-631-938-8127

45-1 Ramsey Road, Shirley, NY 11967, USA