

## Recombinant Human ADCY8 Protein, GST-tagged

**Cat. No.** ADCY8-332H    **Lot. No.** (See product label)

### SPECIFICATION

<b>Product Overview</b>	Human ADCY8 partial ORF ( NP_001106, 1142 a.a. - 1251 a.a.) recombinant protein with GST-tag at N-terminal.
<b>Species</b>	Human
<b>Source</b>	Wheat Germ
<b>Description</b>	Adenylate cyclase is a membrane bound enzyme that catalyses the formation of cyclic AMP from ATP. The enzymatic activity is under the control of several hormones, and different polypeptides participate in the transduction of the signal from the receptor to the catalytic moiety. Stimulatory or inhibitory receptors (Rs and Ri) interact with G proteins (Gs and Gi) that exhibit GTPase activity and they modulate the activity of the catalytic subunit of the adenylyl cyclase [provided by RefSeq, Jul 2008]
<b>Molecular Mass</b>	37.84 kDa
<b>AA Sequence</b>	DQGFAFDYRGEIYVKGISEQEGKIKTYFLLGRVQPNPFILPPRRLLPGQYSLAAVVLGLVQSLNRQRQKQLLNENNNTGIIKGHYNNRRTLLSPSGTEPGAQAEGTDKSDLP
<b>Applications</b>	Enzyme-linked Immunoabsorbent Assay Western Blot (Recombinant protein) Antibody Production Protein Array

 Tel: 1-631-559-9269    1-516-512-3133

 Email: [info@creative-biomart.com](mailto:info@creative-biomart.com)     Fax: 1-631-938-8127

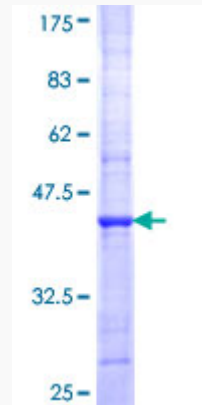
 45-1 Ramsey Road, Shirley, NY 11967, USA

<b>Notes</b>	Best use within three months from the date of receipt of this protein.
<b>Storage</b>	Store at -80 centigrade. Aliquot to avoid repeated freezing and thawing.
<b>Storage Buffer</b>	50 mM Tris-HCl, 10 mM reduced Glutathione, pH=8.0 in the elution buffer.
<b>GENE INFORMATION</b>	
<b>Gene Name</b>	<a href="#">ADCY8 adenylate cyclase 8 (brain) [ Homo sapiens ]</a>
<b>Official Symbol</b>	<a href="#">ADCY8</a>
<b>Synonyms</b>	ADCY8; adenylate cyclase 8 (brain); ADCY3; adenylate cyclase type 8; AC8; HBAC1; adenylyl cyclase 8; ATP pyrophosphate-lyase 8; adenylyl cyclase-8, brain; adenylate cyclase type VIII; ca(2+)/calmodulin-activated adenylyl cyclase;
<b>Gene ID</b>	<a href="#">114</a>
<b>mRNA Refseq</b>	<a href="#">NM_001115</a>
<b>Protein Refseq</b>	<a href="#">NP_001106</a>
<b>MIM</b>	<a href="#">103070</a>
<b>UniProt ID</b>	<a href="#">P40145</a>

 Tel: 1-631-559-9269 1-516-512-3133

 Email: [info@creative-biomart.com](mailto:info@creative-biomart.com)  Fax: 1-631-938-8127

 45-1 Ramsey Road, Shirley, NY 11967, USA



12.5% SDS-PAGE Stained with Coomassie Blue.

 Tel: 1-631-559-9269 1-516-512-3133

 Email: [info@creative-biomart.com](mailto:info@creative-biomart.com)  Fax: 1-631-938-8127

 45-1 Ramsey Road, Shirley, NY 11967, USA