

Recombinant Human ADCY8 protein, His-tagged

Cat. No. ADCY8-7321H Lot. No. (See product label)

SPECIFICATION

Product Overview	Recombinant Human ADCY8 protein(561-715 aa), fused with N-terminal His tag, was expressed in E. coli.
Species	Sars-CoV-2
Source	E.coli
ProteinLength	561-715 aa
Tag	N-His
Form	The purified protein was Lyophilized from sterile PBS (58mM Na ₂ HPO ₄ , 17mM NaH ₂ PO ₄ , 68mM NaCl, pH7.4). 5 % trehalose and 5 % mannitol are added as protectant before lyophilization.
Purity	85%, by SDS-PAGE with Coomassie Brilliant Blue staining.
Storage	Short-term storage: Store at 2-8°C for (1-2 weeks). Long-term storage: Aliquot and store at -20°C to -80°C for up to 3 months, reconstitution with sterile water and addition of an equal volume of glycerol. Avoid repeat freeze-thaw cycles.
Reconstitution	Reconstitute at 0.25 µg/µl in 200 µl sterile water for short-term storage. After reconstitution with sterile water, if glycerol has no effect on subsequent experiments, it is recommended to add an equal volume of glycerol for long-term storage.

 Tel: 1-631-559-9269 1-516-512-3133

 Email: info@creative-biomart.com  Fax: 1-631-938-8127

 45-1 Ramsey Road, Shirley, NY 11967, USA

AA Sequence GDYNVEEGHGKERNEFLRKHNIETYLIKQPEDSLLSLPEDIVKESVSSSDRRNSGAT
 FTEGSWSPELFPDNIVGKQNTLAALTRNSINLLPNHLAQALHVQSGPEEINKRIEHTID
 LRSGDKLRREHIKPFSLMFKDSSLEHKYSQMRDEVFKSN

GENE INFORMATION

Gene Name [ADCY8 adenylate cyclase 8 \(brain\) \[Homo sapiens \]](#)

Official Symbol [ADCY8](#)

Synonyms ADCY8; adenylate cyclase 8 (brain); ADCY3; adenylate cyclase type 8; AC8; HBAC1; adenyl cyclase 8; ATP pyrophosphate-lyase 8; adenyl cyclase-8, brain; adenylate cyclase type VIII; ca(2+)/calmodulin-activated adenyl cyclase;

Gene ID [114](#)

mRNA Refseq [NM_001115](#)

Protein Refseq [NP_001106](#)

MIM [103070](#)

UniProt ID [P40145](#)

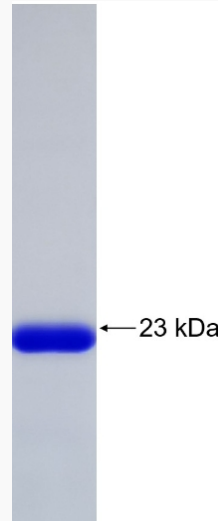
 Tel: 1-631-559-9269 1-516-512-3133

 Email: info@creative-biomart.com  Fax: 1-631-938-8127

 45-1 Ramsey Road, Shirley, NY 11967, USA



SDS-PAGE



Tel: 1-631-559-9269 1-516-512-3133

Email: info@creative-biomart.com Fax: 1-631-938-8127

45-1 Ramsey Road, Shirley, NY 11967, USA