

Recombinant Human ADCYAP1 Protein, Myc/DDK-tagged, C13 and N15-labeled

Cat. No. ADCYAP1-2386H **Lot. No.** (See product label)

SPECIFICATION

Product Overview	ADCYAP1 MS Standard C13 and N15-labeled recombinant protein (NP_001108) with a C-terminal MYC/DDK tag, was expressed in HEK293 cells.
Species	Human
Source	HEK293
Description	This gene encodes a secreted proprotein that is further processed into multiple mature peptides. These peptides stimulate adenylate cyclase and increase cyclic adenosine monophosphate (cAMP) levels, resulting in the transcriptional activation of target genes. The products of this gene are key mediators of neuroendocrine stress responses. Alternative splicing results in multiple transcript variants.
Molecular Mass	18.8 kDa
AA Sequence	MTMCSGARLALLVYGIIMHSSVYSSPAAAGLRFPGIRPEEEAYGEDGNPLPDFDGSE PPGAGSPASAPRAAAAWYRPAGRRDVAHGILNEAYRKVLDQLSAGKHLQSLVARG VGGSLGGGAGDDAEPLSKRHS DGIFTDSYSRYRKQMAVKKYLA AVL GKRYKQRVK NKGRIAYLTRTRPLEQKLISEEDLAANDILDYKDDDDKV
Purity	> 80% as determined by SDS-PAGE and Coomassie blue staining
Stability	Stable for 3 months from receipt of products under proper storage and handling conditions.

 Tel: 1-631-559-9269 1-516-512-3133

 Email: info@creative-biomart.com  Fax: 1-631-938-8127

 45-1 Ramsey Road, Shirley, NY 11967, USA

Storage	Store at -80 centigrade. Avoid repeated freeze-thaw cycles.
Concentration	50 µg/mL as determined by BCA
Storage Buffer	100 mM glycine, 25 mM Tris-HCl, pH 7.3.

GENE INFORMATION

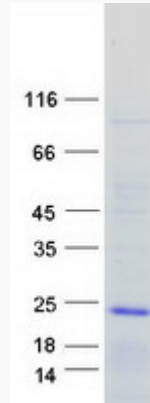
Gene Name	ADCYAP1 adenylate cyclase activating polypeptide 1 [Homo sapiens (human)]
Official Symbol	ADCYAP1
Synonyms	ADCYAP1; adenylate cyclase activating polypeptide 1 (pituitary); pituitary adenylate cyclase-activating polypeptide; PACAP; MGC126852;
Gene ID	116
mRNA Refseq	NM_001117
Protein Refseq	NP_001108
MIM	102980
UniProt ID	P18509

 Tel: 1-631-559-9269 1-516-512-3133

 Email: info@creative-biomart.com  Fax: 1-631-938-8127

 45-1 Ramsey Road, Shirley, NY 11967, USA

SDS-PAGE



 Tel: 1-631-559-9269 1-516-512-3133

 Email: info@creative-biomart.com  Fax: 1-631-938-8127

 45-1 Ramsey Road, Shirley, NY 11967, USA