

## Recombinant Human ADCYAP1 Protein, GST-tagged

**Cat. No.** ADCYAP1-334H    **Lot. No.** (See product label)

### SPECIFICATION

<b>Product Overview</b>	Human ADCYAP1 partial ORF ( NP_001108.1, 95 a.a. - 172 a.a.) recombinant protein with GST-tag at N-terminal.
<b>Species</b>	Human
<b>Source</b>	Wheat Germ
<b>Description</b>	This gene encodes a secreted proprotein that is further processed into multiple mature peptides. These peptides stimulate adenylate cyclase and increase cyclic adenosine monophosphate (cAMP) levels, resulting in the transcriptional activation of target genes. The products of this gene are key mediators of neuroendocrine stress responses. Alternative splicing results in multiple transcript variants. [provided by RefSeq, Feb 2013]
<b>Molecular Mass</b>	34.32 kDa
<b>AA Sequence</b>	VLDQLSAGKHLQSLVARGVGGSLGGGAGDDAEPLSKRHSDGIFTDSYSRYRKQMA VKKYLA AVL GKRYKQRVKNKGRR
<b>Applications</b>	Enzyme-linked Immunoabsorbent Assay Western Blot (Recombinant protein) Antibody Production Protein Array
<b>Notes</b>	Best use within three months from the date of receipt of this protein.

 Tel: 1-631-559-9269    1-516-512-3133

 Email: [info@creative-biomart.com](mailto:info@creative-biomart.com)     Fax: 1-631-938-8127

 45-1 Ramsey Road, Shirley, NY 11967, USA

**Storage** Store at -80 centigrade. Aliquot to avoid repeated freezing and thawing.

**Storage Buffer** 50 mM Tris-HCl, 10 mM reduced Glutathione, pH=8.0 in the elution buffer.

## GENE INFORMATION

**Gene Name** ADCYAP1 adenylate cyclase activating polypeptide 1 (pituitary) [ Homo sapiens ]

**Official Symbol** ADCYAP1

**Synonyms** ADCYAP1; adenylate cyclase activating polypeptide 1 (pituitary); pituitary adenylate cyclase-activating polypeptide; PACAP; MGC126852;

**Gene ID** 116

**mRNA Refseq** NM\_001099733

**Protein Refseq** NP\_001093203

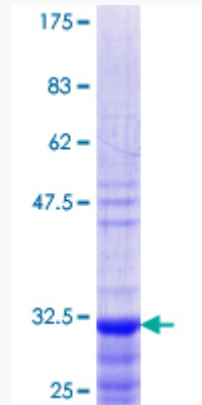
**MIM** 102980

**UniProt ID** P18509

 Tel: 1-631-559-9269 1-516-512-3133

 Email: [info@creative-biomart.com](mailto:info@creative-biomart.com)  Fax: 1-631-938-8127

 45-1 Ramsey Road, Shirley, NY 11967, USA



12.5% SDS-PAGE Stained with Coomassie Blue.

 Tel: 1-631-559-9269 1-516-512-3133

 Email: [info@creative-biomart.com](mailto:info@creative-biomart.com)  Fax: 1-631-938-8127

 45-1 Ramsey Road, Shirley, NY 11967, USA