

# Recombinant Human ADCYAP1 Protein, Myc/DDK-tagged, C13 and N15-labeled

**Cat. No.** ADCYAP1-4155H    **Lot. No.** (See product label)

## SPECIFICATION

<b>Product Overview</b>	ADCYAP1 MS Standard C13 and N15-labeled recombinant protein (NP_001093203) with a C-terminal MYC/DDK tag, was expressed in HEK293 cells.
<b>Species</b>	Human
<b>Source</b>	HEK293
<b>Description</b>	This gene encodes a secreted proprotein that is further processed into multiple mature peptides. These peptides stimulate adenylate cyclase and increase cyclic adenosine monophosphate (cAMP) levels, resulting in the transcriptional activation of target genes. The products of this gene are key mediators of neuroendocrine stress responses. Alternative splicing results in multiple transcript variants.
<b>Molecular Mass</b>	18.8 kDa
<b>AA Sequence</b>	MTMCSGARLALLVYGIIMHSSVYSSPAAAGLRFPGIRPEEEAYGEDGNPLPDFDGSE PPGAGSPASAPRAAAAWYRPAGRRDVAHGILNEAYRKVLDQLSAGKHLQSLVARG VGGSLGGGAGDDAEPLSKRHSDGIFTDSYSRYRKQMAVKKYLA AVL GKRYKQRVK NKGRIAYLTRTRPLEQKLISEEDLAANDILDYKDDDDKV
<b>Purity</b>	> 80% as determined by SDS-PAGE and Coomassie blue staining
<b>Stability</b>	Stable for 3 months from receipt of products under proper storage and handling conditions.

 Tel: 1-631-559-9269    1-516-512-3133

 Email: [info@creative-biomart.com](mailto:info@creative-biomart.com)     Fax: 1-631-938-8127

 45-1 Ramsey Road, Shirley, NY 11967, USA

<b>Storage</b>	Store at -80 centigrade. Avoid repeated freeze-thaw cycles.
<b>Concentration</b>	50 µg/mL as determined by BCA
<b>Storage Buffer</b>	100 mM glycine, 25 mM Tris-HCl, pH 7.3.

## GENE INFORMATION

<b>Gene Name</b>	ADCYAP1 adenylate cyclase activating polypeptide 1 [ Homo sapiens (human) ]
<b>Official Symbol</b>	ADCYAP1
<b>Synonyms</b>	ADCYAP1; adenylate cyclase activating polypeptide 1 (pituitary); pituitary adenylate cyclase-activating polypeptide; PACAP; MGC126852;
<b>Gene ID</b>	116
<b>mRNA Refseq</b>	NM_001099733
<b>Protein Refseq</b>	NP_001093203
<b>MIM</b>	102980
<b>UniProt ID</b>	P18509

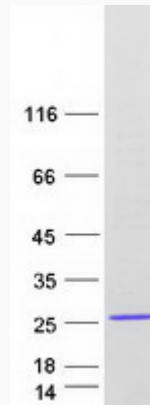
 Tel: 1-631-559-9269 1-516-512-3133

 Email: [info@creative-biomart.com](mailto:info@creative-biomart.com)  Fax: 1-631-938-8127

 45-1 Ramsey Road, Shirley, NY 11967, USA



SDS-PAGE



Tel: 1-631-559-9269 1-516-512-3133

Email: [info@creative-biomart.com](mailto:info@creative-biomart.com) Fax: 1-631-938-8127

45-1 Ramsey Road, Shirley, NY 11967, USA