

Recombinant Human ADCYAP1R1 Protein, GST-tagged

Cat. No. ADCYAP1R1-335H **Lot. No.** (See product label)

SPECIFICATION

Product Overview	Human ADCYAP1R1 partial ORF (NP_001109, 21 a.a. - 120 a.a.) recombinant protein with GST-tag at N-terminal.
Species	Human
Source	Wheat Germ
Description	This gene encodes type I adenylate cyclase activating polypeptide receptor, which is a membrane-associated protein and shares significant homology with members of the glucagon/secretin receptor family. This receptor mediates diverse biological actions of adenylate cyclase activating polypeptide 1 and is positively coupled to adenylate cyclase. Multiple alternatively spliced transcript variants encoding distinct isoforms have been identified. [provided by RefSeq, Dec 2010]
Molecular Mass	36.74 kDa
AA Sequence	MHSDCIFKKEQAMCLEKIQRANELMGFNDSSPGCPGMWDNITCWKPAHV GEMVLV SCPELFRIFNPDQVWETETIGESDFGDSNSLDLSDMGVVSRNCTE
Applications	Enzyme-linked Immunoabsorbent Assay Western Blot (Recombinant protein) Antibody Production Protein Array
Notes	Best use within three months from the date of receipt of this protein.

 Tel: 1-631-559-9269 1-516-512-3133

 Email: info@creative-biomart.com  Fax: 1-631-938-8127

 45-1 Ramsey Road, Shirley, NY 11967, USA

Storage Store at -80 centigrade. Aliquot to avoid repeated freezing and thawing.

Storage Buffer 50 mM Tris-HCl, 10 mM reduced Glutathione, pH=8.0 in the elution buffer.

GENE INFORMATION

Gene Name [ADCYAP1R1 adenylate cyclase activating polypeptide 1 \(pituitary\) receptor type I \[Homo sapiens \]](#)

Official Symbol [ADCYAP1R1](#)

Synonyms ADCYAP1R1; adenylate cyclase activating polypeptide 1 (pituitary) receptor type I; pituitary adenylate cyclase-activating polypeptide type I receptor; PAC1; PAC1R; PACAP receptor 1; PACAPR; PACAP-R1; PACAP type I receptor; pituitary adenylate cyclase activating polypeptide 1 receptor type I Hiphop; PACAPRI;

Gene ID [117](#)

mRNA Refseq [NM_001118](#)

Protein Refseq [NP_001109](#)

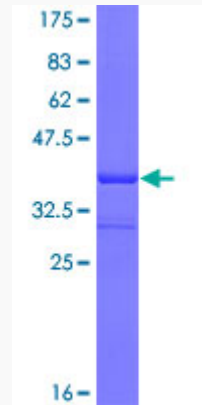
MIM [102981](#)

UniProt ID [P41586](#)

 Tel: 1-631-559-9269 1-516-512-3133

 Email: info@creative-biomart.com  Fax: 1-631-938-8127

 45-1 Ramsey Road, Shirley, NY 11967, USA



12.5% SDS-PAGE Stained with Coomassie Blue.

 Tel: 1-631-559-9269 1-516-512-3133

 Email: info@creative-biomart.com  Fax: 1-631-938-8127

 45-1 Ramsey Road, Shirley, NY 11967, USA