

# Recombinant Human ADD1 Protein, Myc/DDK-tagged, C13 and N15-labeled

**Cat. No.** ADD1-4714H    **Lot. No.** (See product label)

## SPECIFICATION

<b>Product Overview</b>	ADD1 MS Standard C13 and N15-labeled recombinant protein (NP_001110) with a C-terminal MYC/DDK tag, was expressed in HEK293 cells.
<b>Species</b>	Human
<b>Source</b>	HEK293
<b>Description</b>	Adducins are a family of cytoskeletal proteins encoded by three genes (alpha, beta, and gamma). Adducin acts as a heterodimer of the related alpha, beta, or gamma subunits. The protein encoded by this gene represents the alpha subunit. Alpha- and beta-adducin include a protease-resistant N-terminal region and a protease-sensitive, hydrophilic C-terminal region. Adducin binds with high affinity to Ca(2+)/calmodulin and is a substrate for protein kinases A and C.
<b>Molecular Mass</b>	80.8 kDa
<b>AA Sequence</b>	MNGDSRAAVVTSPPTTAPHKERYFDRVDENNPEYLRERNMAPDLRQDFNMMEQ KKRVSMILQSPAFCEELESMIQEQFKKGKNPTGLLALQQIADFMTTNVNPVYPAAPQ GGMAALNMSLGMVTPVNDLRGSDSIAYDKGEKLLRCKLAAFYRLADLFGWSQLIYN HITTRVNSEQEHFLIVPFGLLYSEVTASSLVKINLQGDIVDRGSTNLGVNQAGFTLHS AIYAARPDKCVVHIHTPAGAAVSAMKCGLLPISPEALSLGEVAYHDYHGILVDEEEK VLIQKNLGPKSKVLILRNHGLVSVGESVEEAFYYIHNLVACEIQVRTLASAGGPDNL VLLNPEKYKAKSRSPGSPVGEVGTGSPPKWQIGEQEFEALMRMLDNLGYRTGYPYR

 Tel: 1-631-559-9269    1-516-512-3133

 Email: [info@creative-biomart.com](mailto:info@creative-biomart.com)     Fax: 1-631-938-8127

 45-1 Ramsey Road, Shirley, NY 11967, USA

YPALREKSKKYSDVEVPASVTGYSFASDGDGSGTCSPLRHSFQKQQREKTRWLNSG  
 RGDEASEEGQNGSSPKSKTKWTKEDGHRTSTSAVPLNFVPLNTNPKEVQEMRNKI  
 REQNLQDIKTAGPQSQVLCGVVMDRSLVQGELVTASKAIIIEKEYQPHVIVSTTGPNP  
 FTTLTDRELEEYRREVERKQKGSEENLDEAREQKEKSPDQPAVPHPPPSTPIKLEE  
 DLVPEPTTGDDSDAATFKPTLPDLSPDEPSEALGFPMLEKEEEEHRPPSPTEAPTEA  
 SPEPAPDPAPVAEEAAPSAAVEEGAAADPGSDGSPGKSPSKKKKKFRTPSFLKSKK  
 KSDSTRTRPLEQKLISEEDLAANDILDYKDDDDKV

**Purity** > 80% as determined by SDS-PAGE and Coomassie blue staining

**Stability** Stable for 3 months from receipt of products under proper storage and handling conditions.

**Storage** Store at -80 centigrade. Avoid repeated freeze-thaw cycles.

**Concentration** 50 µg/mL as determined by BCA

**Storage Buffer** 100 mM glycine, 25 mM Tris-HCl, pH 7.3.

## GENE INFORMATION

**Gene Name** [ADD1 adducin 1 \[ Homo sapiens \(human\) \]](#)

**Official Symbol** [ADD1](#)

**Synonyms** ADD1; adducin 1 (alpha); alpha-adducin; erythrocyte adducin alpha subunit; ADDA; MGC3339; MGC44427;

**Gene ID** [118](#)

**mRNA Refseq** [NM\\_001119](#)

 Tel: 1-631-559-9269 1-516-512-3133

 Email: [info@creative-biomart.com](mailto:info@creative-biomart.com)  Fax: 1-631-938-8127

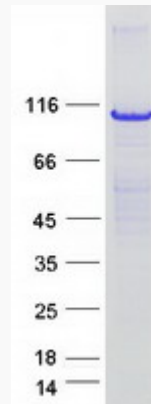
 45-1 Ramsey Road, Shirley, NY 11967, USA

**Protein Refseq** NP\_001110

**MIM** 102680

**UniProt ID** P35611

**SDS-PAGE**



 Tel: 1-631-559-9269 1-516-512-3133

 Email: [info@creative-biomart.com](mailto:info@creative-biomart.com)  Fax: 1-631-938-8127

 45-1 Ramsey Road, Shirley, NY 11967, USA