

Recombinant Human ADD2 Protein, GST-tagged

Cat. No. ADD2-337H Lot. No. (See product label)

SPECIFICATION

Product Overview Human ADD2 full-length ORF (AAH65525.1, 1 a.a. - 726 a.a.) recombinant protein with GST-tag at N-terminal.

Species Human

Source Wheat Germ

Description

Adducins are heteromeric proteins composed of different subunits referred to as adducin alpha, beta and gamma. The three subunits are encoded by distinct genes and belong to a family of membrane skeletal proteins involved in the assembly of spectrin-actin network in erythrocytes and at sites of cell-cell contact in epithelial tissues. While adducins alpha and gamma are ubiquitously expressed, the expression of adducin beta is restricted to brain and hematopoietic tissues. Adducin, originally purified from human erythrocytes, was found to be a heterodimer of adducins alpha and beta. Polymorphisms resulting in amino acid substitutions in these two subunits have been associated with the regulation of blood pressure in an animal model of hypertension. Heterodimers consisting of alpha and gamma subunits have also been described. Structurally, each subunit is comprised of two distinct domains. The amino-terminal region is protease resistant and globular in shape, while the carboxy-terminal region is protease sensitive. The latter contains multiple phosphorylation sites for protein kinase C, the binding site for calmodulin, and is required for association with spectrin and actin. Alternatively spliced transcript variants have been described. [provided by RefSeq, Jun 2010]

 Tel: 1-631-559-9269 1-516-512-3133

 Email: info@creative-biomart.com  Fax: 1-631-938-8127

 45-1 Ramsey Road, Shirley, NY 11967, USA

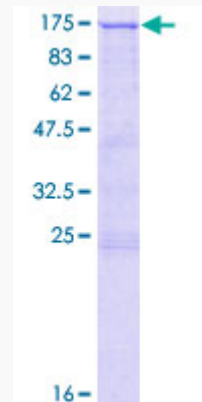
Molecular Mass	107.2 kDa
AA Sequence	<p>MSEETVPEAASPPPPQGGQPYFDRFSEDDPEYMRLRNRAADLRQDFNLMEQKKRVT MILQSPSFREELEGLIQEQMKKGNSSNIWALRQIADFMASHTHAVFPTSSMNVSM MTPINDLHTADSLNLAKGERLMRCKISSVYRLLDLYGWAQLSDTYVTLRVSKEQDHF LISPKGVSCSEVTASSLIKVNILGEVVEKGSSCFVDDTTGFCLHSAIYAARPDVRCIIHL HTPATAAVSAMKWGLLPVSHNALLVGDMAYYDFNGEMEQEADRINLQKCLGPTCKI LVLRNHGVVALGDTVVEAFYKIFHLQAACEIQVSALSSAGGVENLILLEQEKHRPHEV GSVQWAGSTFGPMQKSRLGEHEFEALMRMLDNLGYRTGYTYRHPFVQEKTCHKHS EVEIPATVTAFFVEEDGAPVPALRQHAQKQKQKEKTRWLNTPNAYLRVNVADDEVQRS MGSPRPKTTWMKADEVEKSSSGMPIRIENPNQFVPLYTDPQEVLEMNRNKIREQNRQ DVKSAGPQSQLLASVIAEKSRSPSTESQLMSKGDDEDTKDDSEETVPNPFSQLTDQE LEEYKKEVERKKLELDGEKETAPEEPGSPAKSAPASPVQSPAKEAETKSPLVSPSKS LEEGTKKTETSKAATTEPETTQPEGVVVNGREEEQTAEEILSKGLSQMTTSADTDVD TSKDKTESVTSGPMSPEGSPSKSPSKKKKKFRTPSFLKKSCKKKEKVES</p>
Applications	<p>Enzyme-linked Immunoabsorbent Assay Western Blot (Recombinant protein) Antibody Production Protein Array</p>
Notes	Best use within three months from the date of receipt of this protein.
Storage	Store at -80 centigrade. Aliquot to avoid repeated freezing and thawing.
Storage Buffer	50 mM Tris-HCl, 10 mM reduced Glutathione, pH=8.0 in the elution buffer.
GENE INFORMATION	
Gene Name	ADD2 adducin 2 (beta) [Homo sapiens]

 Tel: 1-631-559-9269 1-516-512-3133

 Email: info@creative-biomart.com  Fax: 1-631-938-8127

 45-1 Ramsey Road, Shirley, NY 11967, USA

Official Symbol	ADD2
Synonyms	ADD2; adducin 2 (beta); beta-adducin; ADDB; erythrocyte adducin subunit beta;
Gene ID	119
mRNA Refseq	NM_001185054
Protein Refseq	NP_001171983
MIM	102681
UniProt ID	P35612



12.5% SDS-PAGE Stained with Coomassie Blue.

 Tel: 1-631-559-9269 1-516-512-3133

 Email: info@creative-biomart.com  Fax: 1-631-938-8127

 45-1 Ramsey Road, Shirley, NY 11967, USA