

Recombinant Rhesus Monkey ADGRE2 Protein, 19-530aa, C-His tagged

Cat. No. ADGRE2-1722R **Lot. No.** (See product label)

SPECIFICATION

Product Overview	Recombinant Rhesus Monkey ADGRE2 Protein (19-530aa) with C-His tag was expressed in HEK293.
Species	Rhesus macaque
Source	HEK293
ProteinLength	19-530 a.a.
Description	Cell surface receptor that binds to the chondroitin sulfate moiety of glycosaminoglycan chains and promotes cell attachment. Promotes granulocyte chemotaxis, degranulation and adhesion. In macrophages, promotes the release of inflammatory cytokines, including IL8 and TNF. Signals probably through G-proteins.
Molecular Mass	The protein has a calculated MW of 57 kDa.
AA Sequence	<p>ETQDSRDCARWCPENSSCVNATACRCNPGFSSSSSEIFTSPTTEICDDINECVPPSKVS CGKSSDCRNTGSDYDCVCPNGYELVSGAKTFKNESENTCQDVDECQQNPRLCKSY GTCVNTLGSFTCQCLPGFKFKPEDPKLCTDVNECTSGQNPCHSSTHCLNNVGSYQ CRCRPGWQPIPGSPNGPNNTICEDVDECSSGLHQCDNSTVCFNTVGSYTCRCRPG WEPKHGIPNNQKDTVCKDMNFPTWTLPPGVHSQTL SQFFNKVQDLDRDFKTSSAK VTIQSILKELDELLEAPGDLETLPFRFQQHCVATHLLDGLDVLRLGLSKNPSIGLLNFSY PAGTEFSLEVQKQVDRNVTLRQNQATMQLHWNLAQKSGDPGPSVVGLVSVPGMG KLLAEAPLVSEPENQVVRNETHQGLLPILLSDVISAFLSNNDTQNLSSPVTFFIFSHRSV</p>

 Tel: 1-631-559-9269 1-516-512-3133

 Email: info@creative-biomart.com  Fax: 1-631-938-8127

 45-1 Ramsey Road, Shirley, NY 11967, USA

IPRRKVLVCFWEHGQNGCGHWATTGCSTMDTRDTSTICRCTHLSSFAVLMAPYDV
QEEDPVLTHHHHHHHH

Purity > 95% by SDS-PAGE

Storage Store it under sterile conditions at -20 to -80 centigrade. It is recommended that the protein be aliquoted for optimal storage. Avoid repeated freeze-thaw cycles.

Concentration 0.135 mg/mL

Storage Buffer Sterile PBS, pH7.4

GENE INFORMATION

Gene Name [ADGRE2 adhesion G protein-coupled receptor E2 \[Macaca mulatta \(Rhesus monkey\) \]](#)

Official Symbol [ADGRE2](#)

Synonyms ADGRE2; adhesion G protein-coupled receptor E2; EMR2; adhesion G protein-coupled receptor E2; EGF-like module receptor 2; EGF-like module-containing mucin-like hormone receptor-like 2; egf-like module containing, mucin-like, hormone receptor-like 2

Gene ID [654420](#)

mRNA Refseq [NM_001038662](#)

Protein Refseq [NP_001033751](#)

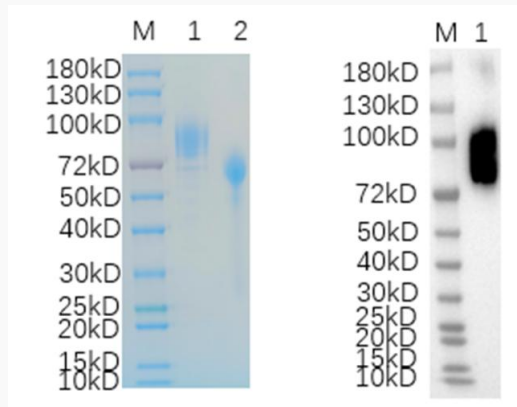
UniProt ID [Q2Q426](#)

 Tel: 1-631-559-9269 1-516-512-3133

 Email: info@creative-biomart.com  Fax: 1-631-938-8127

 45-1 Ramsey Road, Shirley, NY 11967, USA

Reducing 12% SDS-PAGE (CBB stained) and WB (Anti-His Mouse Monoclonal antibody) analysis profiles of purified ADGRE2.



1. ADGRE2
2. BSA

 Tel: 1-631-559-9269 1-516-512-3133

 Email: info@creative-biomart.com  Fax: 1-631-938-8127

 45-1 Ramsey Road, Shirley, NY 11967, USA