

Recombinant Human ADGRE2 protein, His-tagged

Cat. No. ADGRE2-876H **Lot. No.** (See product label)

SPECIFICATION

Product Overview	Recombinant Human ADGRE2 protein(24-537aa), fused with C-terminal His tag, was expressed in HEK293.
Species	Human
Source	HEK293
ProteinLength	24-537aa
Form	Lyophilized from sterile PBS, pH 7.4. Normally 5 % - 8% trehalose is added as protectants before lyophilization. Please see Certificate of Analysis for specific instructions.
Molecular Mass	The protein has a predicted molecular mass of 57.2 kDa after removal of the signal peptide. The apparent molecular mass of ADGRE2-His is approximately 70-100 kDa due to glycosylation.
Purity	The purity of the protein is greater than 85% as determined by SDS-PAGE and Coomassie blue staining.
Storage	Store at -20°C to -80°C for 12 months in lyophilized form. After reconstitution, if not intended for use within a month, aliquot and store at -80°C (Avoid repeated freezing and thawing).Lyophilized proteins are shipped at ambient temperature.
Reconstitution	It is recommended that sterile water be added to the vial to prepare a stock solution of

 Tel: 1-631-559-9269 1-516-512-3133

 Email: info@creative-biomart.com  Fax: 1-631-938-8127

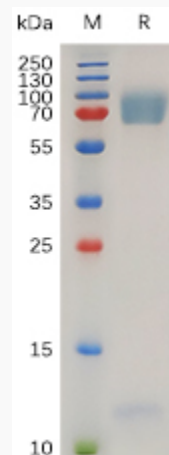
 45-1 Ramsey Road, Shirley, NY 11967, USA

0.2 ug/ul. Centrifuge the vial at 4°C before opening to recover the entire contents.

GENE INFORMATION

Gene Name	ADGRE2 adhesion G protein-coupled receptor E2 [Homo sapiens (human)]
Official Symbol	ADGRE2
Synonyms	Adhesion G protein-coupled receptor E2EGF-like module receptor 2EGF-like module-containing mucin-like hormone receptor-like 2CD312
Gene ID	30817
mRNA Refseq	NM_001271052
Protein Refseq	NP_001257981
UniProt ID	Q9UHX3

SDS-PAGE



Tel: 1-631-559-9269 1-516-512-3133

Email: info@creative-biomart.com Fax: 1-631-938-8127

45-1 Ramsey Road, Shirley, NY 11967, USA