

Recombinant Human ADH1A Protein, GST-tagged

Cat. No. ADH1A-344H **Lot. No.** (See product label)

SPECIFICATION

Product Overview	Human ADH1A partial ORF (NP_000658, 298 a.a. - 375 a.a.) recombinant protein with GST-tag at N-terminal.
Species	Human
Source	Wheat Germ
Description	This gene encodes a member of the alcohol dehydrogenase family. The encoded protein is the alpha subunit of class I alcohol dehydrogenase, which consists of several homo- and heterodimers of alpha, beta and gamma subunits. Alcohol dehydrogenases catalyze the oxidation of alcohols to aldehydes. This gene is active in the liver in early fetal life but only weakly active in adult liver. This gene is found in a cluster with six additional alcohol dehydrogenase genes, including those encoding the beta and gamma subunits, on the long arm of chromosome 4. Mutations in this gene may contribute to variation in certain personality traits and substance dependence. [provided by RefSeq, Nov 2010]
Molecular Mass	34.32 kDa
AA Sequence	DSQNLSMNPMLLLTGRTWKGAILGGFKSKECVPKLVADFMKKFSLDALITHVLPFE KINEGFDLLHSGKSIRTILMF
Applications	Enzyme-linked Immunoabsorbent Assay Western Blot (Recombinant protein) Antibody Production

 Tel: 1-631-559-9269 1-516-512-3133

 Email: info@creative-biomart.com  Fax: 1-631-938-8127

 45-1 Ramsey Road, Shirley, NY 11967, USA

Protein Array

Notes	Best use within three months from the date of receipt of this protein.
Storage	Store at -80 centigrade. Aliquot to avoid repeated freezing and thawing.
Storage Buffer	50 mM Tris-HCl, 10 mM reduced Glutathione, pH=8.0 in the elution buffer.

GENE INFORMATION

Gene Name	ADH1A alcohol dehydrogenase 1A (class I), alpha polypeptide [Homo sapiens]
Official Symbol	ADH1A
Synonyms	ADH1A; alcohol dehydrogenase 1A (class I), alpha polypeptide; ADH1; alcohol dehydrogenase 1A; ADH, alpha subunit; aldehyde reductase; alcohol dehydrogenase subunit alpha; alcohol dehydrogenase 1 (class I), alpha polypeptide;
Gene ID	124
mRNA Refseq	NM_000667
Protein Refseq	NP_000658
MIM	103700
UniProt ID	P07327

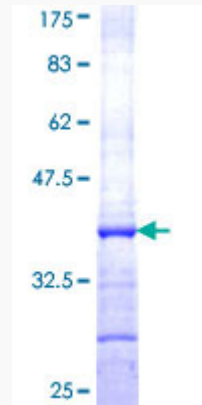
 Tel: 1-631-559-9269 1-516-512-3133

 Email: info@creative-biomart.com  Fax: 1-631-938-8127

 45-1 Ramsey Road, Shirley, NY 11967, USA

Quality Control

Testing:



12.5% SDS-PAGE Stained with Coomassie Blue.

 Tel: 1-631-559-9269 1-516-512-3133

 Email: info@creative-biomart.com  Fax: 1-631-938-8127

 45-1 Ramsey Road, Shirley, NY 11967, USA