

Recombinant Human ADH1A Protein, Myc/DDK-tagged, C13 and N15-labeled

Cat. No. ADH1A-3601H **Lot. No.** (See product label)

SPECIFICATION

Product Overview

ADH1A MS Standard C13 and N15-labeled recombinant protein (NP_000658) with a C-terminal MYC/DDK tag, was expressed in HEK293 cells.

Species

Human

Source

HEK293

Description

This gene encodes a member of the alcohol dehydrogenase family. The encoded protein is the alpha subunit of class I alcohol dehydrogenase, which consists of several homo- and heterodimers of alpha, beta and gamma subunits. Alcohol dehydrogenases catalyze the oxidation of alcohols to aldehydes. This gene is active in the liver in early fetal life but only weakly active in adult liver. This gene is found in a cluster with six additional alcohol dehydrogenase genes, including those encoding the beta and gamma subunits, on the long arm of chromosome 4. Mutations in this gene may contribute to variation in certain personality traits and substance dependence.

Molecular Mass

39.7 kDa

AA Sequence

MSTAGKVIKCKAAVLWELKKPFSIEEVEVAPPKAHEVRIKMVAAGICRSDEHVVSGN
LVTPLPVILGHEAAGIVESVGEVTTVKPGDKVIPLFTPQCGKCRICKNPESNYCLKN
DLGNPRGTLQDGTRRFTCSGKPIHHFVGVSTFSQYTVVDENAVAKIDAASPLEKVCL
IGCGFSTGYGSAVKVAKVTPGSTCAVFGLGGVGLSVVMGCKAAGAARIIVDINKDK

 Tel: 1-631-559-9269 1-516-512-3133

 Email: info@creative-biomart.com  Fax: 1-631-938-8127

 45-1 Ramsey Road, Shirley, NY 11967, USA

FAKAKELGATECINPQDYKKPIQEVLKEMTDGGVDFSFEVIGRLDTMMASLLCCEA
 CGTSVIVGVPPDSQNLNINPMLLLTGRTWKGAIFGGFKSKESVPKLVADFMAKKFSL
 DALITNILPFEKINEGFDLLRSGKSIRTILMFTRTRPLEQKLISEEDLAANDILDYKDDDD
 KV

Purity > 80% as determined by SDS-PAGE and Coomassie blue staining

Stability Stable for 3 months from receipt of products under proper storage and handling conditions.

Storage Store at -80 centigrade. Avoid repeated freeze-thaw cycles.

Concentration 50 µg/mL as determined by BCA

Storage Buffer 100 mM glycine, 25 mM Tris-HCl, pH 7.3.

GENE INFORMATION

Gene Name [ADH1A alcohol dehydrogenase 1A \(class I\), alpha polypeptide \[Homo sapiens \(human\) \]](#)

Official Symbol [ADH1A](#)

Synonyms ADH1A; alcohol dehydrogenase 1A (class I), alpha polypeptide; ADH1; alcohol dehydrogenase 1A; ADH, alpha subunit; aldehyde reductase; alcohol dehydrogenase subunit alpha; alcohol dehydrogenase 1 (class I), alpha polypeptide;

Gene ID [124](#)

mRNA Refseq [NM_000667](#)

 Tel: 1-631-559-9269 1-516-512-3133

 Email: info@creative-biomart.com  Fax: 1-631-938-8127

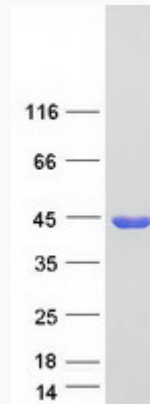
 45-1 Ramsey Road, Shirley, NY 11967, USA

Protein Refseq NP_000658

MIM 103700

UniProt ID P07327

SDS-PAGE



 Tel: 1-631-559-9269 1-516-512-3133

 Email: info@creative-biomart.com  Fax: 1-631-938-8127

 45-1 Ramsey Road, Shirley, NY 11967, USA