

Recombinant Human ADH1A protein, His-tagged

Cat. No. ADH1A-9416H Lot. No. (See product label)

SPECIFICATION

Product Overview	Recombinant Human ADH1A protein(1-375 aa), fused with N-terminal His tag, was expressed in E. coli.
Species	Human
Source	E.coli
ProteinLength	1-375 aa
Tag	N-His
Form	The purified protein was Lyophilized from sterile PBS (58mM Na ₂ HPO ₄ , 17mM NaH ₂ PO ₄ , 68mM NaCl, pH7.4). 5 % trehalose and 5 % mannitol are added as protectant before lyophilization.
Purity	90%, by SDS-PAGE with Coomassie Brilliant Blue staining.
Storage	Short-term storage: Store at 2-8°C for (1-2 weeks). Long-term storage: Aliquot and store at -20°C to -80°C for up to 3 months, reconstitution with sterile water and addition of an equal volume of glycerol. Avoid repeat freeze-thaw cycles.
Reconstitution	Reconstitute at 0.25 µg/µl in 200 µl sterile water for short-term storage. After reconstitution with sterile water, if glycerol has no effect on subsequent experiments, it is recommended to add an equal volume of glycerol for long-term storage.

 Tel: 1-631-559-9269 1-516-512-3133

 Email: info@creative-biomart.com  Fax: 1-631-938-8127

 45-1 Ramsey Road, Shirley, NY 11967, USA

AA Sequence

MSTAGKVIKCKAAVLWELKKPFSIEEVEVAPPKAHEVRIKMVAVGICGTDHVVSGT
 MVTPLPVILGHEAAGIVESVGEGVTTVKPGDKVIPLAIPQCCKCRICKNPESNYCLKN
 DVSNPQGTLQDGTSRFTCRRKPIHHFLGISTFSQYTVVDENAVAKIDAASPLEKVCLI
 GCGFSTGYGSAVNVAKVTPGSTCAVFLGGVGLSAIMGCKAAGAARIIAVDINKDKF
 AKAKELGATECINPQDYKKPIQEVLKEMTDGGVDFSFEVIGRLDTMMASLLCCHEAC
 GTSVIVGVPPDSQNLSMNPMLLLTGRTWKGAILGGFKSKECVPKLVADFMKKFSL
 DALITHVLPFEKINEGFDLLHSGKSIRTILMF

GENE INFORMATION

Gene Name	ADH1A alcohol dehydrogenase 1A (class I), alpha polypeptide [Homo sapiens]
Official Symbol	ADH1A
Synonyms	ADH1A; alcohol dehydrogenase 1A (class I), alpha polypeptide; ADH1; alcohol dehydrogenase 1A; ADH, alpha subunit; aldehyde reductase; alcohol dehydrogenase subunit alpha; alcohol dehydrogenase 1 (class I), alpha polypeptide;
Gene ID	124
mRNA Refseq	NM_000667
Protein Refseq	NP_000658
MIM	103700
UniProt ID	P07327

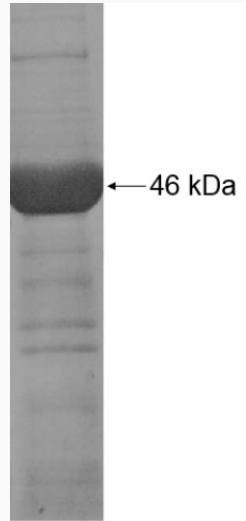
 Tel: 1-631-559-9269 1-516-512-3133

 Email: info@creative-biomart.com  Fax: 1-631-938-8127

 45-1 Ramsey Road, Shirley, NY 11967, USA



SDS-PAGE



☎ Tel: 1-631-559-9269 1-516-512-3133

☎ Email: info@creative-biomart.com ☎ Fax: 1-631-938-8127

☎ 45-1 Ramsey Road, Shirley, NY 11967, USA