

# Recombinant Full Length Human ADH1B Protein, C-Flag-tagged

**Cat. No.** ADH1B-1428HFL    **Lot. No.** (See product label)

## SPECIFICATION

<b>Product Overview</b>	Recombinant Full Length Human ADH1B Protein, fused to Flag-tag at C-terminus, was expressed in Mammalian cells.
<b>Species</b>	Human
<b>Source</b>	Mammalian Cells
<b>Description</b>	The protein encoded by this gene is a member of the alcohol dehydrogenase family. Members of this enzyme family metabolize a wide variety of substrates, including ethanol, retinol, other aliphatic alcohols, hydroxysteroids, and lipid peroxidation products. This encoded protein, consisting of several homo- and heterodimers of alpha, beta, and gamma subunits, exhibits high activity for ethanol oxidation and plays a major role in ethanol catabolism. Three genes encoding alpha, beta and gamma subunits are tandemly organized in a genomic segment as a gene cluster. Two transcript variants encoding different isoforms have been found for this gene.
<b>Form</b>	25 mM Tris HCl, pH 7.3, 100 mM glycine, 10% glycerol.
<b>Molecular Mass</b>	39.7 kDa
<b>AA Sequence</b>	MSTAGKVIKCKAAVLWEVKKPFSIEDVEVAPPKAYEVRIKMVAVGICRTDDHVVSGN LVTPLPVILGHEA AGIVESVGEVTTVKPGDKVIPLFTPQCGKCRVCKNPESNYCLK NDLGNPRGTLQDGTRRFTCRGKPIHH FLGTSTFSQYTVVDENAVAKIDAASPLEKV CLIGCGFSTGYGSAVNVAKVTPGSTCAVFGGLGGVGLSAVM GCKAAGAARIIVDINK

 Tel: 1-631-559-9269    1-516-512-3133

 Email: [info@creative-biomart.com](mailto:info@creative-biomart.com)     Fax: 1-631-938-8127

 45-1 Ramsey Road, Shirley, NY 11967, USA

DKFAKAKELGATECINPQDYKKPIQEVLKEMTDGGVDFSFEVIGRLDTMMASL LCCH  
 EACGTSVIVGVPPASQNLSINPMLLLTGRTWKGAVYGGFKSKEGIPKLVADFMKKF  
 SLDALITHV  
 LPFEKINEGFDLLHSGKSIRTVLTFTRTRPLEQKLISEEDLAANDILDYKDDDDKV

<b>Purity</b>	> 80% as determined by SDS-PAGE and Coomassie blue staining.
<b>Stability</b>	Stable for 12 months from the date of receipt of the product under proper storage and handling conditions. Avoid repeated freeze-thaw cycles.
<b>Storage</b>	Store at -80 centigrade.
<b>Concentration</b>	>50 ug/mL as determined by microplate BCA method.
<b>Preparation</b>	Recombinant protein was captured through anti-DDK affinity column followed by conventional chromatography steps.
<b>Protein Families</b>	Druggable Genome
<b>Protein Pathways</b>	Drug metabolism - cytochrome P450, Fatty acid metabolism, Glycolysis / Gluconeogenesis, Metabolic pathways, Metabolism of xenobiotics by cytochrome P450, Retinol metabolism, Tyrosine metabolism
<b>Full Length</b>	Full L.

## GENE INFORMATION

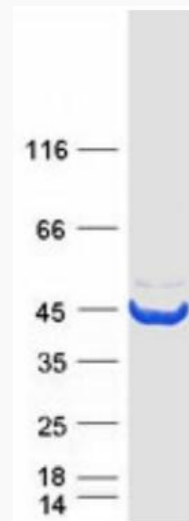
<b>Gene Name</b>	ADH1B alcohol dehydrogenase 1B (class I), beta polypeptide [ Homo sapiens (human) ]
<b>Official Symbol</b>	ADH1B

 Tel: 1-631-559-9269 1-516-512-3133

 Email: [info@creative-biomart.com](mailto:info@creative-biomart.com)  Fax: 1-631-938-8127

 45-1 Ramsey Road, Shirley, NY 11967, USA

<b>Synonyms</b>	ADH2; HEL-S-117
<b>Gene ID</b>	125
<b>mRNA Refseq</b>	NM_000668.6
<b>Protein Refseq</b>	NP_000659.2
<b>MIM</b>	103720
<b>UniProt ID</b>	P00325



Coomassie blue staining of purified ADH1B protein.

 Tel: 1-631-559-9269 1-516-512-3133

 Email: [info@creative-biomart.com](mailto:info@creative-biomart.com)  Fax: 1-631-938-8127

 45-1 Ramsey Road, Shirley, NY 11967, USA